

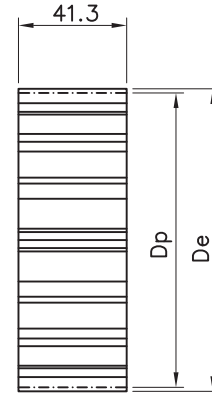
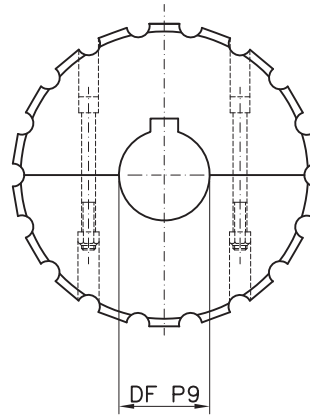
indice	4	Serie 812/815/881M Pignoni fresati
	5	Serie 812/815/881M Ruote rinvio fresate
	7	Serie 812/815/881M Ruote traino e rinvio stampate
	7	Serie 812/815/881M Ruote traino stampate
	8	Serie 812/815/881M Ruote rinvio stampate
	9	Serie 815 mini Pignoni fresati
	10	Serie 815 mini Ruote rinvio fresate
	12	Serie 802/804/805 Pignoni fresati
	13	Serie 802/804/805 Ruote rinvio fresate
	15	Serie 802/805 Ruote traino e rinvio stampate
	15	Serie 802/805 Ruote rinvio stampate
	16	Serie 8127/8817M Pignoni fresati
	17	Serie 8127/8817M Ruote rinvio fresate
	19	Serie 8127/8817M Ruote traino e rinvio stampate
	19	Serie 8127/8817M Ruote rinvio stampate
	20	Serie 881/8811/881TAB/8811TAB/8811R-TAB/815TAB Pignoni fresati
	21	Serie 881/8811/881TAB/8811TAB/8811R-TAB/815TAB Ruote rinvio fresate
	22	Serie 881TAB/8811TAB/8811R-TAB/815TAB Ruote rinvio fresate
	23	Serie 881/8811 Ruote rinvio fresate
	24	Serie 881/8811/881TAB/8811TAB Ruote traino stampate
	25	Serie 881/8811/881TAB/8811TAB/8811R-TAB/815TAB Ruote rinvio stampate
	25	Serie 881TAB/8811TAB/8811R-TAB/815TAB Ruote rinvio stampate
	26	Serie 881/8811 Ruote rinvio stampate



PIGNONI FRESATI
Serie 812/815/881M

Pignoni in due metà
materiale: poliammide - viti in acciaio inox
sede chiavetta UNI 6604-69

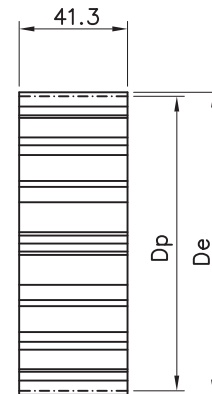
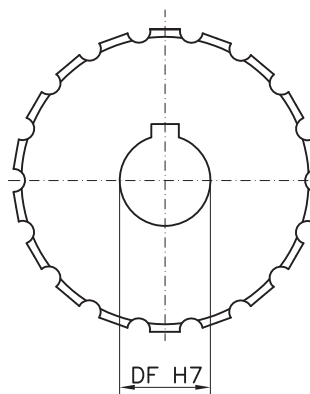
CODICE	Z	De	Dp	A	Df
S11017 18	17	103.9	105.47	55.9	18*
S11017 25					25
S11017 30					30
S11017 35					35
S11017 40					40
S11019 18	19	117.0	117.34	61.9	18*
S11019 25					25
S11019 30					30
S11019 35					35
S11019 40					40
S11021 18	21	129.0	129.26	67.8	18*
S11021 25					25
S11021 30					30
S11021 35					35
S11021 40					40
S11023 18	23	142.0	141.21	73.8	18*
S11023 25					25
S11023 30					30
S11023 35					35
S11023 40					40
S11025 18	25	154.0	153.21	79.8	18*
S11025 25					25
S11025 30					30
S11025 35					35
S11025 40					40
S11027 18	27	166.8	165.2	85.8	18*
S11027 25					25
S11027 30					30
S11027 35					35
S11027 40					40
S11029 18	29	178.5	177.24	91.8	18*
S11029 25					25
S11029 30					30
S11029 35					35
S11029 40					40



Pignoni interi
materiale: poliammide
sede chiavetta UNI 6604-69

* foro grezzo

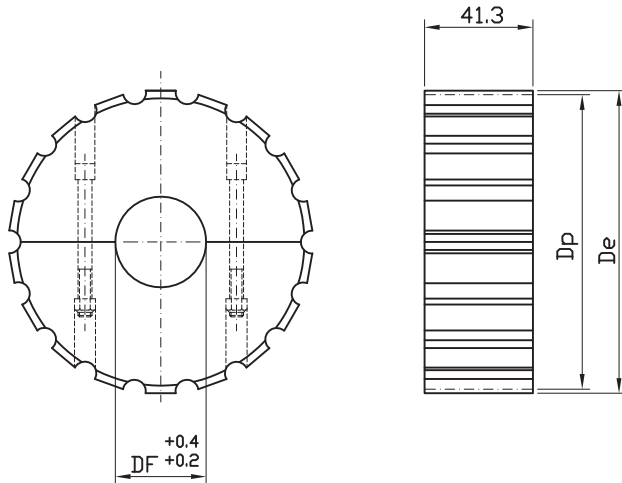
CODICE	Z	De	Dp	A	Df
S01017 25	17	103.9	105.47	55.9	25
S01017 30					30
S01017 35					35
S01017 40					40
S01019 25					19
S01019 30	30				
S01019 35	35				
S01019 40	40				
S01021 25	21	129.0	129.26	67.8	
S01021 30					30
S01021 35					35
S01021 40					40
S01023 25					23
S01023 30	30				
S01023 35	35				
S01023 40	40				
S01025 25	25	154.0	153.21	79.8	
S01025 30					30
S01025 35					35
S01025 40					40
S01027 25					27
S01027 30	30				
S01027 35	35				
S01027 40	40				
S01029 25	29	178.5	177.24	91.8	
S01029 30					30
S01029 35					35
S01029 40					40



RUOTE RINVIO FRESATE
Serie 812/815/881M

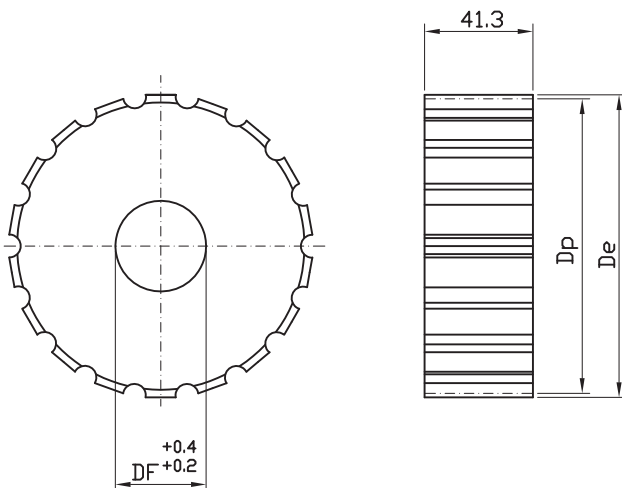


Ruote rinvio in due metà
 materiale: poliammide - viti in acciaio inox



CODICE	Z	De	Dp	A	Df
R11017 25	17	103.9	105.47	55.9	25
R11017 30					30
R11017 35					35
R11017 40					40
R11019 25	19	117.0	117.34	61.9	25
R11019 30					30
R11019 35					35
R11019 40					40
R11021 25	21	129.0	129.26	67.8	25
R11021 30					30
R11021 35					35
R11021 40					40
R11023 25	23	142.0	141.21	73.8	25
R11023 30					30
R11023 35					35
R11023 40					40
R11025 25	25	154.0	153.21	79.8	25
R11025 30					30
R11025 35					35
R11025 40					40
R11027 25	27	166.8	165.2	85.8	25
R11027 30					30
R11027 35					35
R11027 40					40
R11029 25	29	178.5	177.24	91.8	25
R11029 30					30
R11029 35					35
R11029 40					40

Ruote rinvio intere
 materiale: poliammide



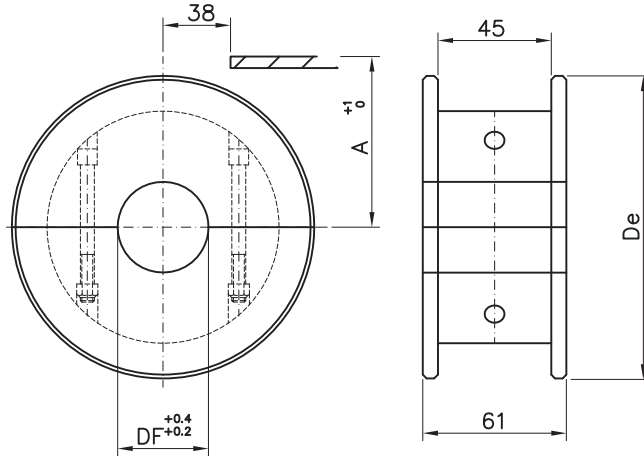
CODICE	Z	De	Dp	A	Df
R01017 25	17	103.9	105.47	55.9	25
R01017 30					30
R01017 35					35
R01017 40					40
R01019 25	19	117.0	117.34	61.9	25
R01019 30					30
R01019 35					35
R01019 40					40
R01021 25	21	129.0	129.26	67.8	25
R01021 30					30
R01021 35					35
R01021 40					40
R01023 25	23	142.0	141.21	73.8	25
R01023 30					30
R01023 35					35
R01023 40					40
R01025 25	25	154.0	153.21	79.8	25
R01025 30					30
R01025 35					35
R01025 40					40
R01027 25	27	166.8	165.2	85.8	25
R01027 30					30
R01027 35					35
R01027 40					40
R01029 25	29	178.5	177.24	91.8	25
R01029 30					30
R01029 35					35
R01029 40					40



RUOTE RINVIO FRESATE
Serie 812/815/881M

Ruote rinvio in due metà
materiale: poliammide - viti in acciaio inox

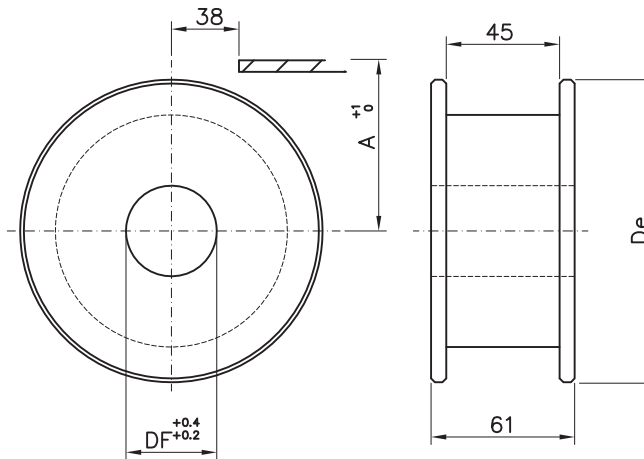
CODICE	Z equiv.	De	A	Df
P11617 20	17	104.0	56.2	20
P11617 25				25
P11617 30				30
P11617 35				35
P11617 40				40
P11619 20	19	117.0	62.6	20
P11619 25				25
P11619 30				30
P11619 35				35
P11619 40				40
P11621 20	21	129.8	68.6	20
P11621 25				25
P11621 30				30
P11621 35				35
P11621 40				40
P11623 20	23	142.2	74.6	20
P11623 25				25
P11623 30				30
P11623 35				35
P11623 40				40
P11625 20	25	154.7	80.5	20
P11625 25				25
P11625 30				30
P11625 35				35
P11625 40				40
P11627 20	27	167.2	88.5	20
P11627 25				25
P11627 30				30
P11627 35				35
P11627 40				40



P11629 20	29	179.3	92.8	20
P11629 25				25
P11629 30				30
P11629 35				35
P11629 40				40

Ruote rinvio intere
materiale: poliammide

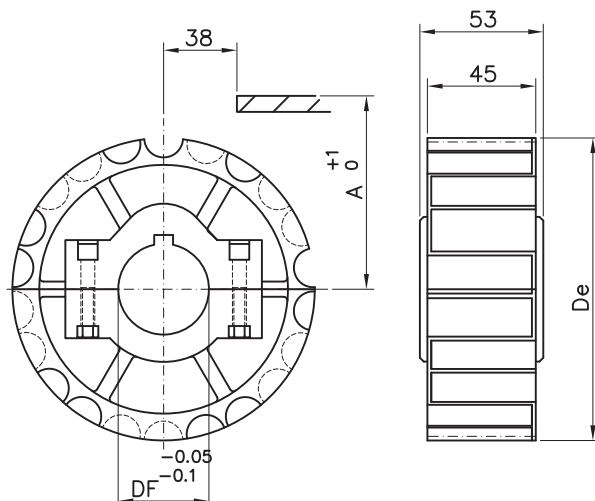
CODICE	Z equiv.	De	A	Df
P01617 20	17	104.0	56.2	20
P01617 25				25
P01617 30				30
P01617 35				35
P01617 40				40
P01619 20	19	117.0	62.6	20
P01619 25				25
P01619 30				30
P01619 35				35
P01619 40				40
P01621 20	21	129.8	68.6	20
P01621 25				25
P01621 30				30
P01621 35				35
P01621 40				40
P01623 20	23	142.2	74.6	20
P01623 25				25
P01623 30				30
P01623 35				35
P01623 40				40
P01625 20	25	154.7	80.5	20
P01625 25				25
P01625 30				30
P01625 35				35
P01625 40				40
P01627 20	27	167.2	88.5	20
P01627 25				25
P01627 30				30
P01627 35				35
P01627 40				40



P01629 20	29	179.3	92.8	20
P01629 25				25
P01629 30				30
P01629 35				35
P01629 40				40

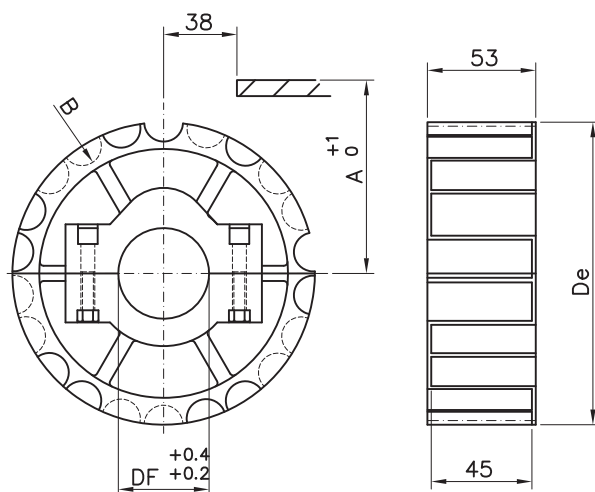


Pignoni in due metà
 materiale: poliammide rinforzata - viti in acciaio inox,
 dadi in ottone nichelato - sede chiavetta UNI 6604-69



CODICE	Z	De	A	B	Df
S10021 25	21	129.0	67.8	116.1	25
S10021 30					30
S10021 35					35
S10021 40					40
S10021 45					45
S10023 25	23	142.0	73.8	128.1	25
S10023 30					30
S10023 35					35
S10023 40					40
S10023 45					45
S10025 25	25	154.0	79.8	140.1	25
S10025 30					30
S10025 35					35
S10025 40					40
S10025 45					45

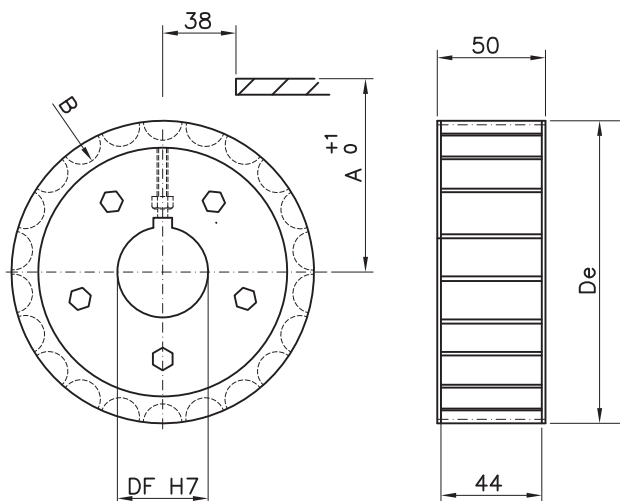
Ruote rinvio in due metà
 materiale: poliammide - viti in acciaio inox,
 dadi in ottone nichelato



CODICE	Z	De	A	B	Df
R10021 25	21	129.0	67.8	116.1	25
R10021 30					30
R10021 35					35
R10021 40					40
R10021 45					45
R10023 25	23	142.0	73.8	128.1	25
R10023 30					30
R10023 35					35
R10023 40					40
R10023 45					45
R10025 25	25	154.0	79.8	140.1	25
R10025 30					30
R10025 35					35
R10025 40					40
R10025 45					45

PIGNONI STAMPATI
Serie 812/815/881M

Pignoni interi
 materiale: poliammide rinforzata - viti in acciaio inox
 sede chiavetta UNI 6604-69



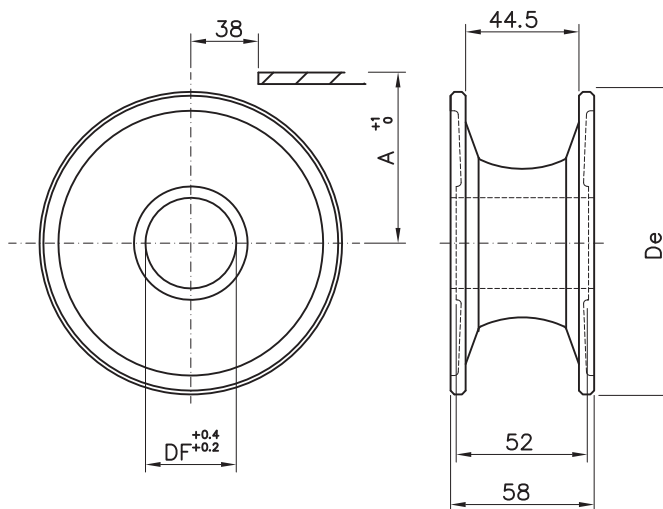
CODICE	Z	De	Dp	A	B	Df
S00015 25	15	92.2	93.67	/	/	25
S00015 30						30
S00017 25	17	104.7	105.48	/	/	25
S00017 30						30
S00019 25	19	117.0	117.34	61.9	104.2	25
S00019 30						30
S00019 35						35
S00019 40						40
S00021 25						21
S00021 30	30					
S00021 35	35					
S00021 40	40					
S00023 25	23	142.0	141.21	73.8	128.1	
S00023 30						30
S00023 35						35
S00023 40						40
S00025 25						25
S00025 30	30					
S00025 35	35					
S00025 40	40					



RUOTE RINVIO STAMPATE
Serie 812/815/881M

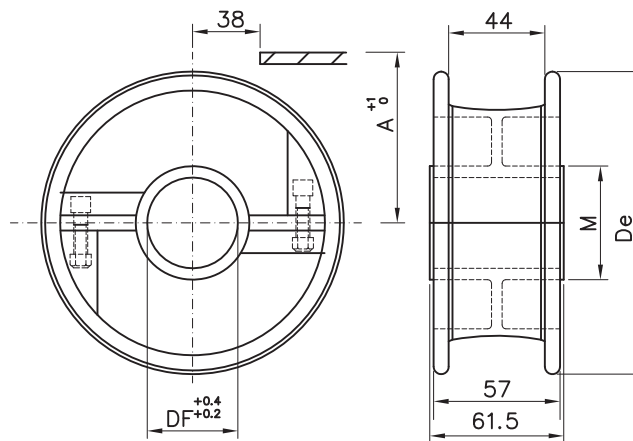
Ruote rinvio intere serie rinforzata
materiale: poliammide autolubrificante
colore: nero

CODICE	Z equiv.	De	A	Df
P00615 25	15	95.5	92.0	25
P00615 30				30
P00617 25	17	106.5	57.0	25
P00617 30				30
P00618 25	18	113.0	92.0	25
P00618 30				30
P00619 20	19	117.0	62.6	20
P00619 25				25
P00619 30				30
P00619 35				35
P00619 40				40
P00621 20	21	129.8	68.6	20
P00621 25				25
P00621 30				30
P00621 35				35
P00621 40				40
P00623 20	23	142.2	74.6	20
P00623 25				25
P00623 30				30
P00623 35				35
P00623 40	40			
P00625 20	25	154.7	80.5	20
P00625 25				25
P00625 30				30
P00625 35				35
P00625 40				40



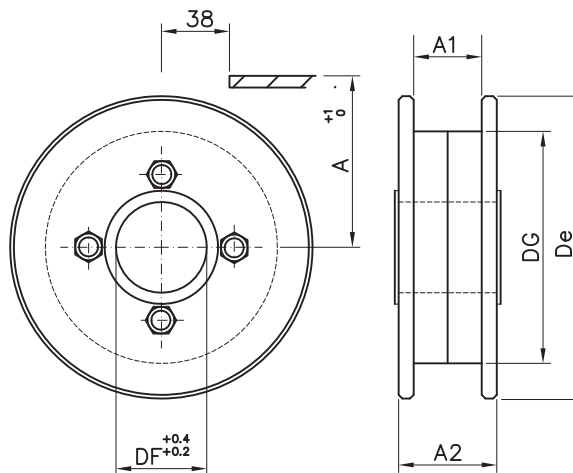
Ruote rinvio in due metà autolubrificanti
materiale: poliammide autolubrificante - viti in acciaio inox / colore: nero

CODICE	Z equiv.	De	A	M	Df
P10621 25	21	130	48.2	35	25
P10621 30				40	30
P10621 35				45	35
P10621 40				50	40
P10623 25	23	142.5	74.6	40	25
P10623 30				40	30
P10623 35				50	35
P10623 40				50	40
P10625 25	25	154.5	80.5	35	25
P10625 30				40	30
P10625 35				45	35
P10625 40				50	40



Ruote rinvio intere autolubrificanti
materiale: poliammide autolubrificante / colore: nero

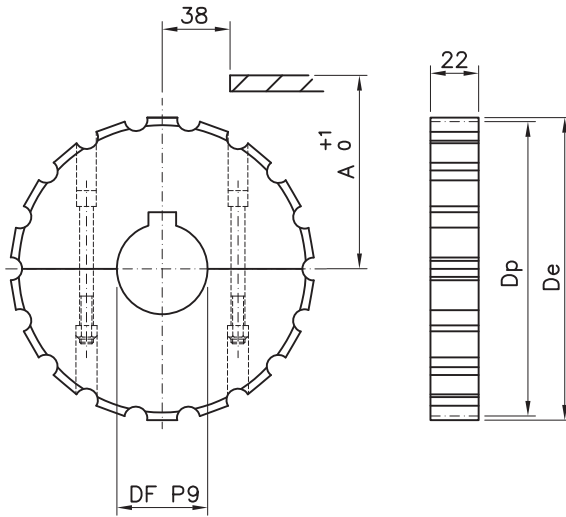
CODICE	Z equiv.	De	Dg	A	A1	A2	Df
K00615 30	15	90.0	58.0	48.2	48.0	83.0	30
K00615 35							35
K00615 40							40
K00615 45							45
K00617 25	17	106.0	71.0	56.2	44.0	52.0	25
K00617 30							30
K00619 25	19	118.0	80.0	62.6	44.0	60.0	25
K00619 30							30
K00619 35							35
K00619 40							40
K00621 25	21	129.8	80.0	68.6	44.0	60.0	25
K00621 30							30
K00621 35							35
K00621 40							40
K00623 25	23	142.5	108.0	74.6	44.0	60.0	25
K00623 30							30
K00623 35							35
K00623 40							40
K00625 25	25	155.0	108.0	80.5	44.0	60.0	25
K00625 30							30
K00625 35							35
K00625 40							40



PIGNONI FRESATI
Serie 815 mini



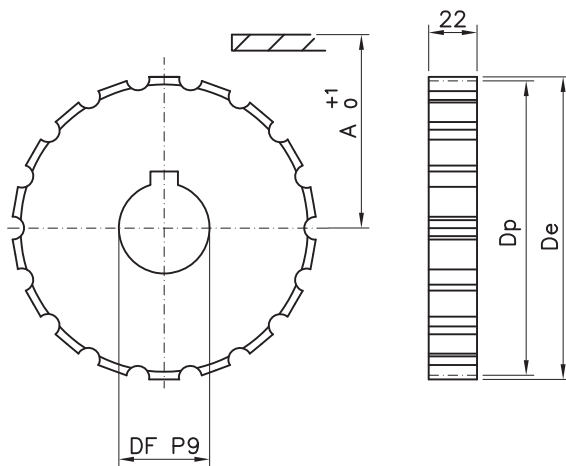
Pignoni in due metà
materiale: poliammide - viti in acciaio inox
sede chiavetta UNI 6604-69



CODICE	Z	De	Dp	A	Df
S11119 18	19	117.0	117.34	61.9	18*
S11119 25					25
S11119 30					30
S11119 35					35
S11119 40					40
S11121 18	21	129.0	129.26	67.8	18*
S11121 25					25
S11121 30					30
S11121 35					35
S11121 40					40
S11123 18	23	142.0	141.21	73.8	18*
S11123 25					25
S11123 30					30
S11123 35					35
S11123 40					40
S11125 18	25	154.0	153.21	79.8	18*
S11125 25					25
S11125 30					30
S11125 35					35
S11125 40					40

* foro grezzo

Pignoni interi
materiale: poliammide
Sede chiavetta UNI 6604-69



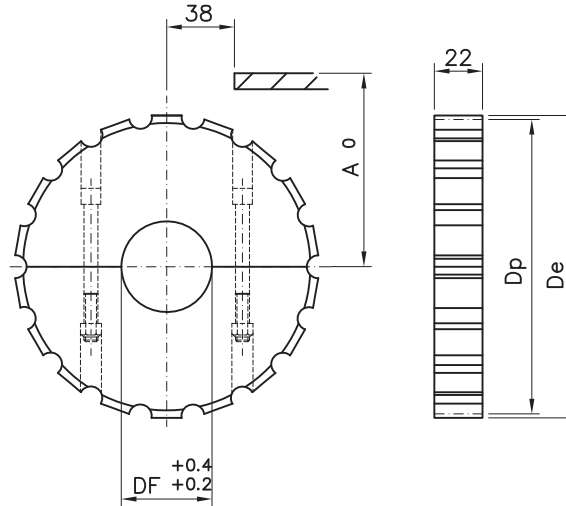
CODICE	Z	De	Dp	A	Df
S01119 25	19	117.0	117.34	61.9	25
S01119 30					30
S01119 35					35
S01119 40					40
S01121 25	21	129.0	129.26	67.8	25
S01121 30					30
S01121 35					35
S01121 40					40
S01123 25	23	142.0	141.21	73.8	25
S01123 30					30
S01123 35					35
S01123 40					40
S01125 25	25	154.0	153.21	79.8	25
S01125 30					30
S01125 35					35
S01125 40					40



RUOTE RINVIO FRESATE
Serie 815 mini

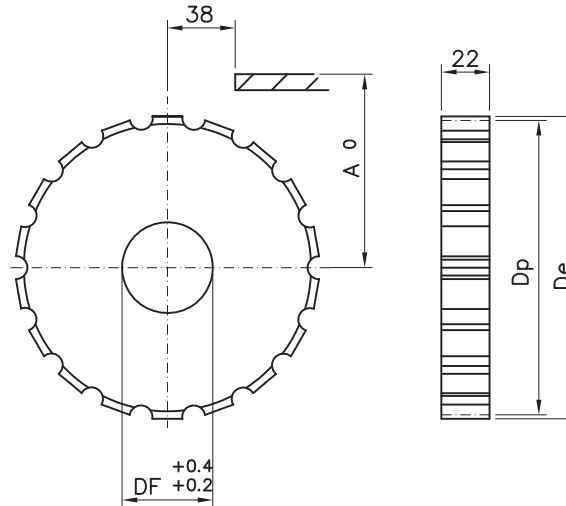
Ruote rinvio in due metà
materiale: poliammide - viti in acciaio inox
sede chiavetta UNI 6604-69

CODICE	Z equiv.	De	Dp	A	Df
R11119 25	19	117.0	117.34	61.9	25
R11119 30					30
R11119 35					35
R11119 40					40
R11121 25	21	129.0	129.26	67.8	25
R11121 30					30
R11121 35					35
R11121 40					40
R11123 25	23	142.0	141.21	73.8	25
R11123 30					30
R11123 35					35
R11123 40					40
R11125 25	25	154.0	153.21	79.8	25
R11125 30					30
R11125 35					35
R11125 40					40



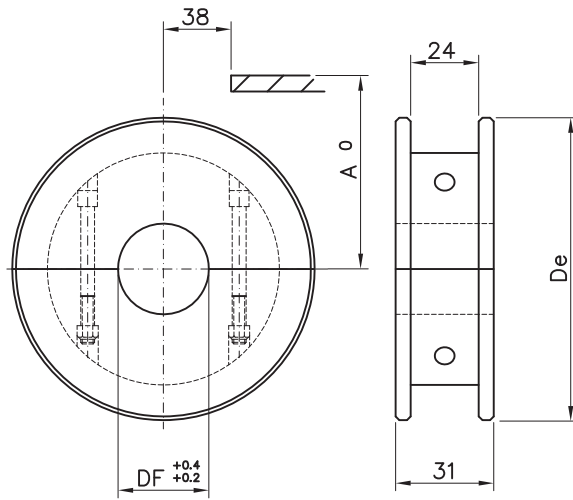
Ruote rinvio intere
materiale: poliammide
sede chiavetta UNI 6604-69

CODICE	Z equiv.	De	Dp	A	Df
R01119 25	19	117.0	117.34	61.9	25
R01119 30					30
R01119 35					35
R01119 40					40
R01121 25	21	129.0	129.26	67.8	25
R01121 30					30
R01121 35					35
R01121 40					40
R01123 25	23	142.0	141.21	73.8	25
R01123 30					30
R01123 35					35
R01123 40					40
R01125 25	25	154.0	153.21	79.8	25
R01125 30					30
R01125 35					35
R01125 40					40



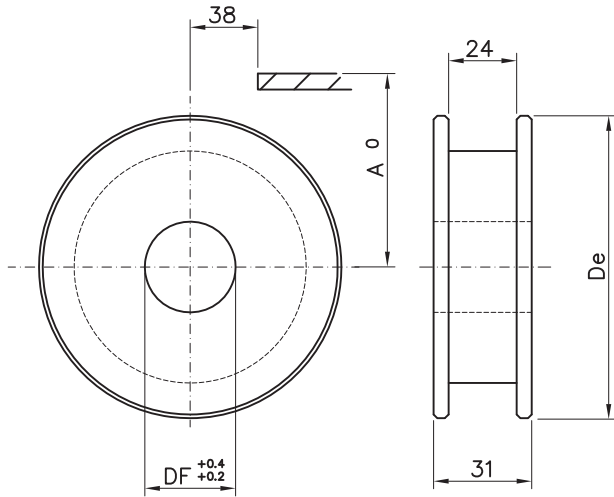


Ruote rinvio in due metà
 materiale: poliammide - viti in acciaio inox



CODICE	Z	De	A	Df
P11119 20				20
P11119 25				25
P11119 30	19	117.0	62.6	30
P11119 35				35
P11119 40				40
P11121 20				20
P11121 25				25
P11121 30	21	129.8	68.6	30
P11121 35				35
P11121 40				40
P11123 20				20
P11123 25				25
P11123 30	23	142.2	74.6	30
P11123 35				35
P11123 40				40
P11125 20				20
P11125 25				25
P11125 30	25	154.7	80.5	30
P11125 35				35
P11125 40				40

Ruote rinvio intere
 materiale: poliammide



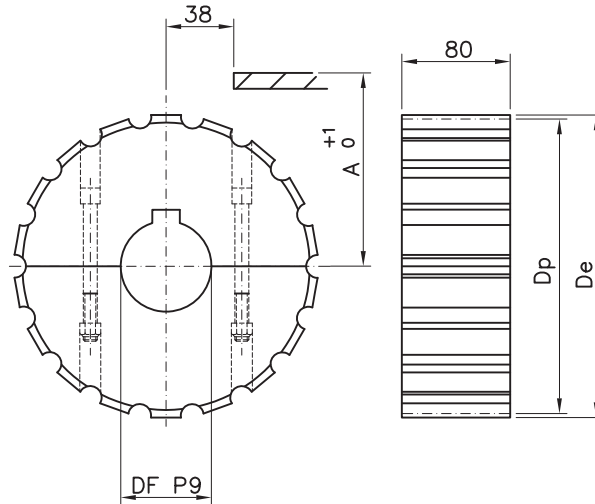
CODICE	Z	De	A	Df
P01119 20				20
P01119 25				25
P01119 30	19	117.0	62.6	30
P01119 35				35
P01119 40				40
P01121 20				20
P01121 25				25
P01121 30	21	129.8	68.6	30
P01121 35				35
P01121 40				40
P01123 20				20
P01123 25				25
P01123 30	23	142.2	74.6	30
P01123 35				35
P01123 40				40
P01125 20				20
P01125 25				25
P01125 30	25	154.7	80.5	30
P01125 35				35
P01125 40				40



PIGNONI FRESATI
Serie 802/804/805

Pignoni in due metà
materiale: poliammide - viti in acciaio inox
sede chiavetta UNI 6604-69

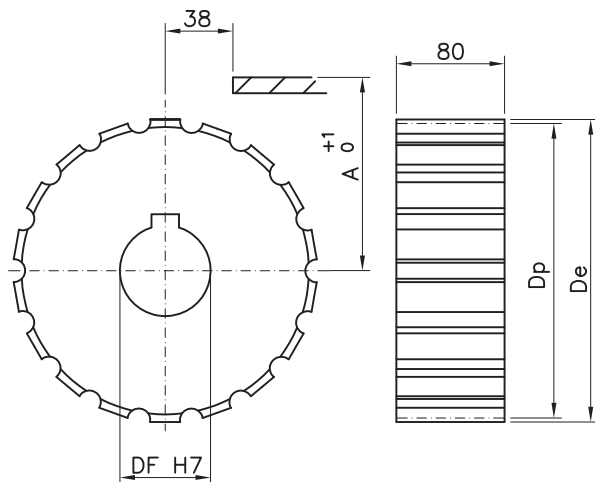
CODICE	Z	De	Dp	A	Df
S11719 18	19	117.0	117.34	61.9	18*
S11719 25					25
S11719 30					30
S11719 35					35
S11719 40					40
S11721 18	21	129.0	129.26	67.8	18*
S11721 25					25
S11721 30					30
S11721 35					35
S11721 40					40
S11723 18	23	142.0	141.21	73.8	18*
S11723 25					25
S11723 30					30
S11723 35					35
S11723 40					40
S11725 18	25	154.0	153.21	79.8	18*
S11725 25					25
S11725 30					30
S11725 35					35
S11725 40					40
S11727 18	27	166.8	165.2	85.8	18*
S11727 25					25
S11727 30					30
S11727 35					35
S11727 40					40
S11729 18	29	178.5	177.24	91.8	18*
S11729 25					25
S11729 30					30
S11729 35					35
S11729 40					40



* foro grezzo

Pignoni interi
materiale: poliammide
sede chiavetta UNI 6604-69

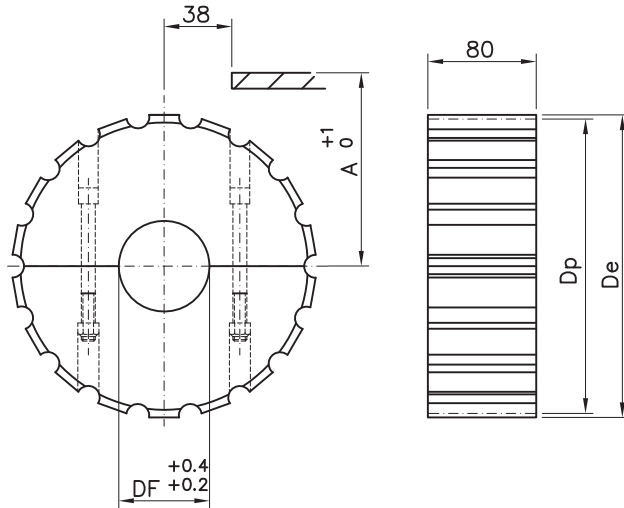
CODICE	Z	De	Dp	A	Df
S01719 25	19	117.0	117.34	61.9	25
S01719 30					30
S01719 35					35
S01719 40					40
S01721 25					21
S01721 30	30				
S01721 35	35				
S01721 40	40				
S01723 25	23	142.0	141.21	73.8	
S01723 30					30
S01723 35					35
S01723 40					40
S01725 25					25
S01725 30	30				
S01725 35	35				
S01725 40	40				
S01727 25	27	166.8	165.2	85.8	
S01727 30					30
S01727 35					35
S01727 40					40
S01729 25					29
S01729 30	30				
S01729 35	35				
S01729 40	40				



RUOTE RINVIO FRESATE
Serie 802/804/805

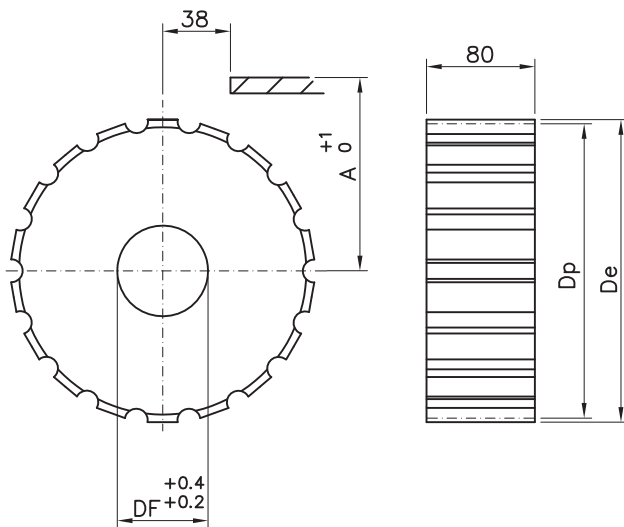


Ruote rinvio in due metà
 materiale: poliammide - viti in acciaio inox



CODICE	Z equiv.	De	Dp	A	Df
R11719 25	19	117.0	117.34	61.9	25
R11719 30					30
R11719 35					35
R11719 40					40
R11721 25	21	129.0	129.26	67.8	25
R11721 30					30
R11721 35					35
R11721 40					40
R11723 25	23	142.0	141.21	73.8	25
R11723 30					30
R11723 35					35
R11723 40					40
R11725 25	25	154.0	153.21	79.8	25
R11725 30					30
R11725 35					35
R11725 40					40
R11727 25	27	166.8	165.2	85.8	25
R11727 30					30
R11727 35					35
R11727 40					40
R11729 25	29	178.5	177.24	91.8	25
R11729 30					30
R11729 35					35
R11729 40					40

Ruote rinvio intere
 materiale: poliammide



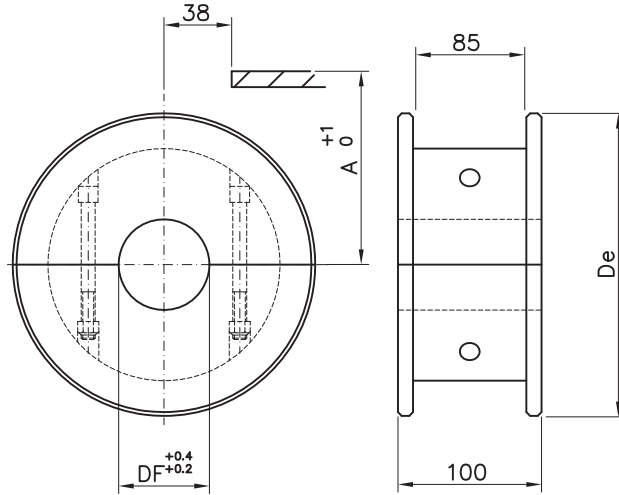
CODICE	Z	De	Dp	A	Df
R01719 25	19	117.0	117.34	61.9	25
R01719 30					30
R01719 35					35
R01719 40					40
R01721 25	21	129.0	129.26	67.8	25
R01721 30					30
R01721 35					35
R01721 40					40
R01723 25	23	142.0	141.21	73.8	25
R01723 30					30
R01723 35					35
R01723 40					40
R01725 25	25	154.0	153.21	79.8	25
R01725 30					30
R01725 35					35
R01725 40					40
R01727 25	27	166.8	165.2	85.8	25
R01727 30					30
R01727 35					35
R01727 40					40
R01729 25	29	178.5	177.24	91.8	25
R01729 30					30
R01729 35					35
R01729 40					40



RUOTE RINVIO FRESATE
Serie 802/805

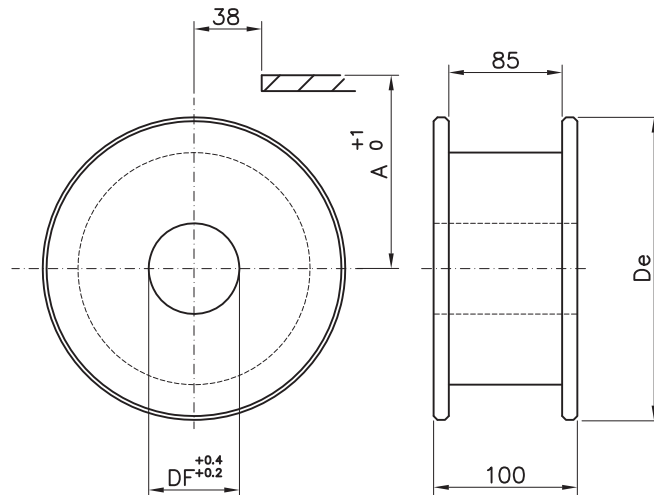
Ruote rinvio in due metà
materiale: poliammide - viti in acciaio inox

CODICE	Z equiv.	De	A	Df
P11219 20	19	117.0	62.6	20
P11219 25				25
P11219 30				30
P11219 35				35
P11219 40				40
P11221 20	21	129.8	68.6	20
P11221 25				25
P11221 30				30
P11221 35				35
P11221 40				40
P11223 20	23	142.2	74.6	20
P11223 25				25
P11223 30				30
P11223 35				35
P11223 40				40
P11225 20	25	154.7	80.5	20
P11225 25				25
P11225 30				30
P11225 35				35
P11225 40				40
P11227 20	27	167.2	88.5	20
P11227 25				25
P11227 30				30
P11227 35				35
P11227 40				40
P11229 20	29	179.3	92.8	20
P11229 25				25
P11229 30				30
P11229 35				35
P11229 40				40



Ruote rinvio intere
materiale: poliammide

CODICE	Z equiv.	De	A	Df
P01219 20	19	117.0	62.6	20
P01219 25				25
P01219 30				30
P01219 35				35
P01219 40				40
P01221 20	21	129.8	68.6	20
P01221 25				25
P01221 30				30
P01221 35				35
P01221 40				40
P01223 20	23	142.2	74.6	20
P01223 25				25
P01223 30				30
P01223 35				35
P01223 40				40
P01225 20	25	154.7	80.5	20
P01225 25				25
P01225 30				30
P01225 35				35
P01225 40				40
P01227 20	27	167.2	88.5	20
P01227 25				25
P01227 30				30
P01227 35				35
P01227 40				40
P01229 20	29	179.3	92.8	20
P01229 25				25
P01229 30				30
P01229 35				35
P01229 40				40

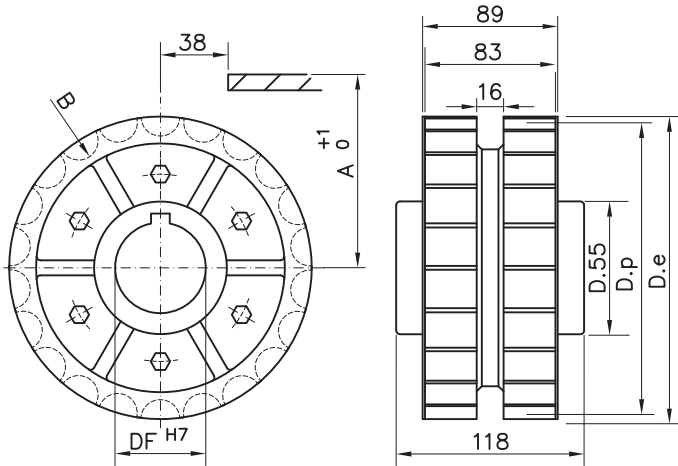


RUOTE TRAINO E RINVIO STAMPATE
Serie 802/805



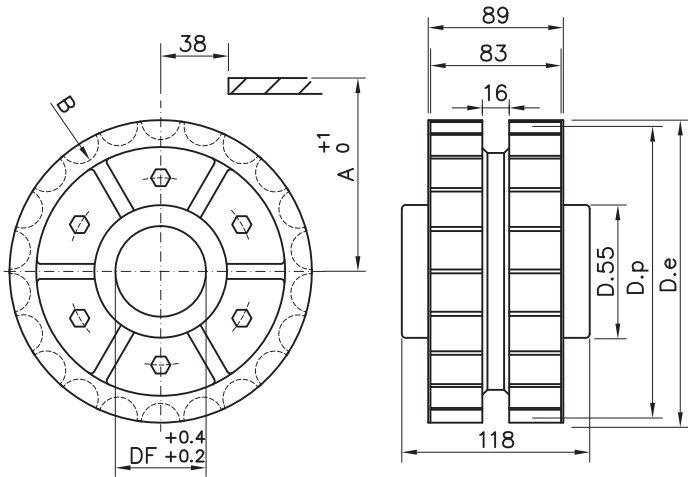
Pignone motore
 materiale: poliammide rinforzata - viti in acciaio inox
 sede chiavetta UNI 6604-69

CODICE	Z	De	Dp	A	B	Df
S00225 25	25	154.0	153.2	79.8	140.1	25
S00225 30						30
S00225 35						35
S00225 40						40



Ruote rinvio intere
 materiale: poliammide - viti in acciaio inox

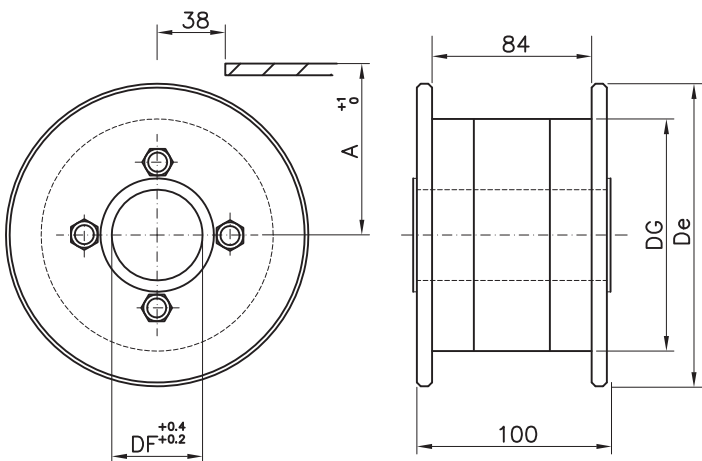
CODICE	Z	De	Dp	A	B	Df
R00225 25	25	154.0	153.2	79.8	140.1	25
R00225 30						30
R00225 35						35
R00225 40						40



RUOTE RINVIO STAMPATE
Serie 802/805

Ruote rinvio intere autolubrificanti
 materiale: poliammide autolubrificante -
 viti in acciaio zincato / colore: nero

CODICE	Z equiv.	De	Dg	A	Df
K00219 25	19	118.0	80.0	62.6	25
K00219 30					30
K00219 35					35
K00219 40					40
K00221 25	21	129.8	80.0	68.6	25
K00221 30					30
K00221 35					35
K00221 40					40
K00223 25	23	142.5	108.0	74.6	25
K00223 30					30
K00223 35					35
K00223 40					40
K00225 25	25	155.0	108.0	80.5	25
K00225 30					30
K00225 35					35
K00225 40					40

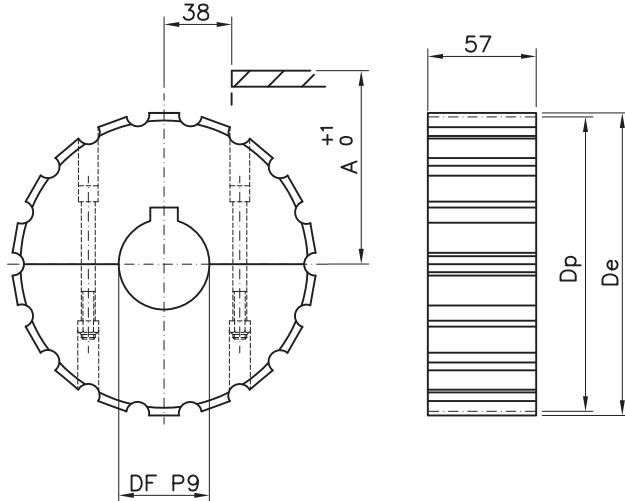




PIGNONI FRESATI
Serie 8127/8817M

Pignoni in due metà
materiale: poliammide - viti in acciaio inox
sede chiavetta UNI 6604-69

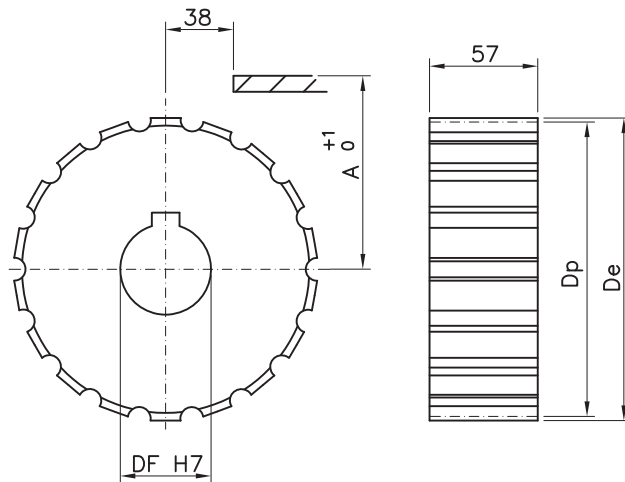
CODICE	Z	De	Dp	A	Df
S11317 18	17	103.9	105.47	55.9	18*
S11317 25					25
S11317 30					30
S11317 35					35
S11317 40					40
S11319 18	19	117.0	117.34	61.9	18*
S11319 25					25
S11319 30					30
S11319 35					35
S11319 40					40
S11321 18	21	129.0	129.26	67.8	18*
S11321 25					25
S11321 30					30
S11321 35					35
S11321 40					40
S11323 18	23	142.0	141.21	73.8	18*
S11323 25					25
S11323 30					30
S11323 35					35
S11323 40					40
S11325 18	25	154.0	153.21	79.8	18*
S11325 25					25
S11325 30					30
S11325 35					35
S11325 40					40
S11327 18	27	166.8	165.2	85.8	18*
S11327 25					25
S11327 30					30
S11327 35					35
S11327 40					40
S11329 18	29	178.5	177.24	91.8	18*
S11329 25					25
S11329 30					30
S11329 35					35
S11329 40					40



Pignoni interi
materiale: poliammide
sede chiavetta UNI 6604-69

* foro grezzo

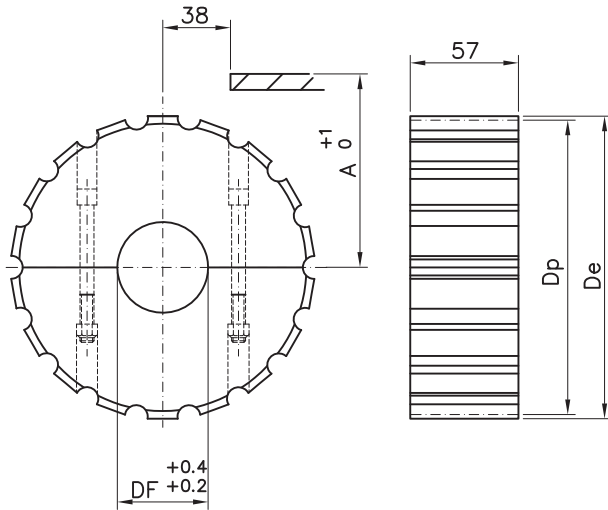
CODICE	Z	De	Dp	A	Df
S01317 25	17	103.9	105.47	55.9	25
S01317 30					30
S01317 35					35
S01317 40					40
S01319 25					19
S01319 30	30				
S01319 35	35				
S01319 40	40				
S01321 25	21	129.0	129.26	67.8	
S01321 30					30
S01321 35					35
S01321 40					40
S01323 25					23
S01323 30	30				
S01323 35	35				
S01323 40	40				
S01325 25	25	154.0	153.21	79.8	
S01325 30					30
S01325 35					35
S01325 40					40
S01327 25					27
S01327 30	30				
S01327 35	35				
S01327 40	40				
S01329 25	29	178.5	177.24	91.8	
S01329 30					30
S01329 35					35
S01329 40					40



RUOTE RINVIO FRESATE
Serie 8127/8817M

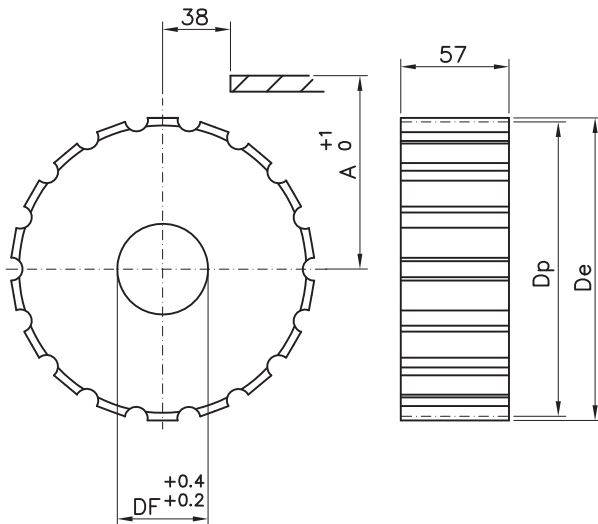


Ruote rinvio in due metà
 materiale: poliammide - viti in acciaio inox



CODICE	Z	De	Dp	A	Df
R11317 25	17	103.9	105.47	55.9	25
R11317 30					30
R11317 35					35
R11317 40					40
R11319 25	19	117.0	117.34	61.9	25
R11319 30					30
R11319 35					35
R11319 40					40
R11321 25	21	129.0	129.26	67.8	25
R11321 30					30
R11321 35					35
R11321 40					40
R11323 25	23	142.0	141.21	73.8	25
R11323 30					30
R11323 35					35
R11323 40					40
R11325 25	25	154.0	153.21	79.8	25
R11325 30					30
R11325 35					35
R11325 40					40
R11327 25	27	166.8	165.2	85.8	25
R11327 30					30
R11327 35					35
R11327 40					40
R11329 25	29	178.5	177.24	91.8	25
R11329 30					30
R11329 35					35
R11329 40					40

Ruote rinvio intere
 materiale: poliammide



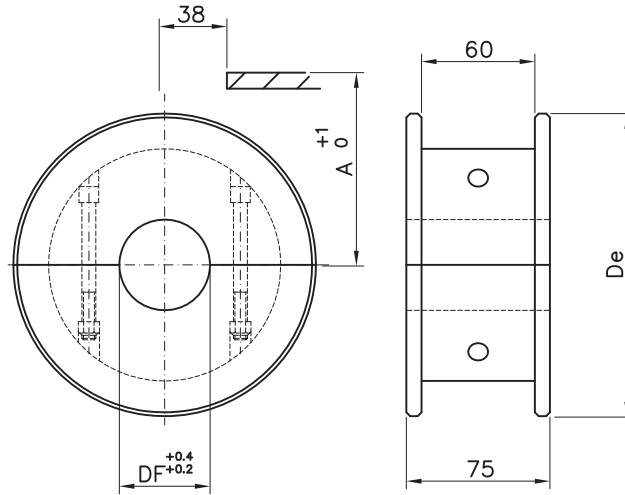
CODICE	Z	De	Dp	A	Df
R01317 25	17	103.9	105.47	55.9	25
R01317 30					30
R01317 35					35
R01317 40					40
R01319 25	19	117.0	117.34	61.9	25
R01319 30					30
R01319 35					35
R01319 40					40
R01321 25	21	129.0	129.26	67.8	25
R01321 30					30
R01321 35					35
R01321 40					40
R01323 25	23	142.0	141.21	73.8	25
R01323 30					30
R01323 35					35
R01323 40					40
R01325 25	25	154.0	153.21	79.8	25
R01325 30					30
R01325 35					35
R01325 40					40
R01327 25	27	166.8	165.2	85.8	25
R01327 30					30
R01327 35					35
R01327 40					40
R01329 25	29	178.5	177.24	91.8	25
R01329 30					30
R01329 35					35
R01329 40					40



RUOTE RINVIO FRESATE
Serie 8127/8817M

Ruote rinvio in due metà
materiale: poliammide - viti in acciaio inox

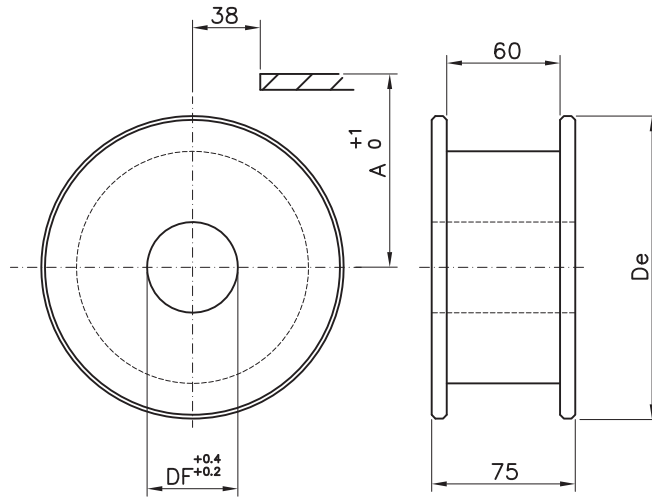
CODICE	Z equiv.	De	A	Df
P11417 20	17	104.0	56.2	20
P11417 25				25
P11417 30				30
P11417 35				35
P11417 40				40
P11419 20	19	117.0	62.6	20
P11419 25				25
P11419 30				30
P11419 35				35
P11419 40				40
P11421 20	21	129.8	68.6	20
P11421 25				25
P11421 30				30
P11421 35				35
P11421 40				40
P11423 20	23	142.2	74.6	20
P11423 25				25
P11423 30				30
P11423 35				35
P11423 40				40
P11425 20	25	154.7	80.5	20
P11425 25				25
P11425 30				30
P11425 35				35
P11425 40				40
P11427 20	27	167.2	88.5	20
P11427 25				25
P11427 30				30
P11427 35				35
P11427 40				40



P11429 20	29	179.3	92.8	20
P11429 25				25
P11429 30				30
P11429 35				35
P11429 40				40

Ruote rinvio intere
materiale: poliammide

CODICE	Z equiv.	De	A	Df
P01417 20	17	104.0	56.2	20
P01417 25				25
P01417 30				30
P01417 35				35
P01417 40				40
P01419 20	19	117.0	62.6	20
P01419 25				25
P01419 30				30
P01419 35				35
P01419 40				40
P01421 20	21	129.8	68.6	20
P01421 25				25
P01421 30				30
P01421 35				35
P01421 40				40
P01423 20	23	142.2	74.6	20
P01423 25				25
P01423 30				30
P01423 35				35
P01423 40				40
P01425 20	25	154.7	80.5	20
P01425 25				25
P01425 30				30
P01425 35				35
P01425 40				40
P01427 20	27	167.2	88.5	20
P01427 25				25
P01427 30				30
P01427 35				35
P01427 40				40

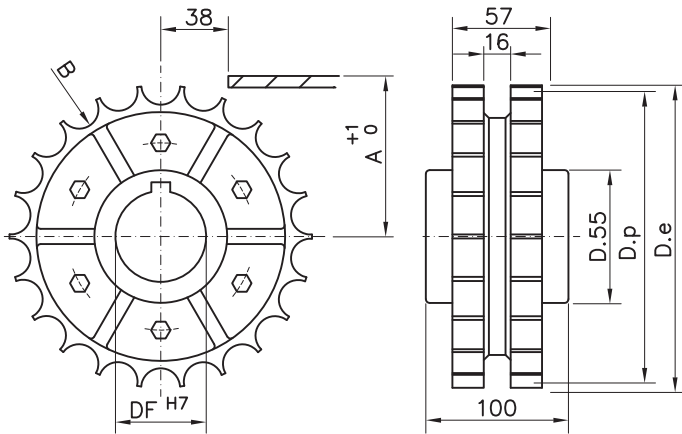


P01429 20	29	179.3	92.8	20
P01429 25				25
P01429 30				30
P01429 35				35
P01429 40				40

RUOTE TRAINO E RINVIO STAMPATE
Serie 8127/8817M

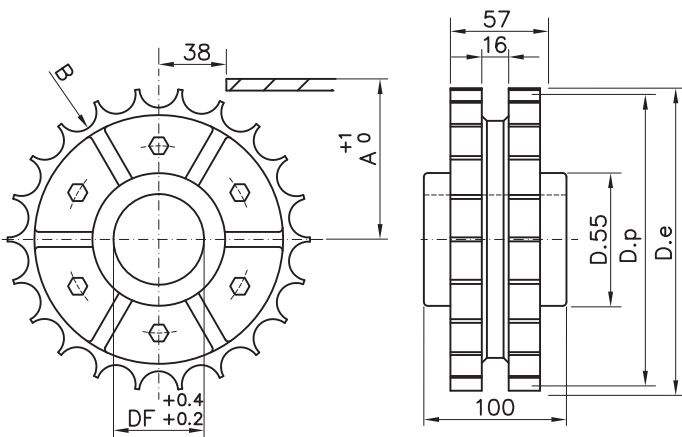


Pignone motore in pezzo unico
 materiale: poliammide rinforzata - viti in acciaio inox



CODICE	Z	De	Dp	A	B	Df
S00325 25	25	154.0	153.2	79.8	140.1	25
S00325 30						30
S00325 35						35
S00325 40						40

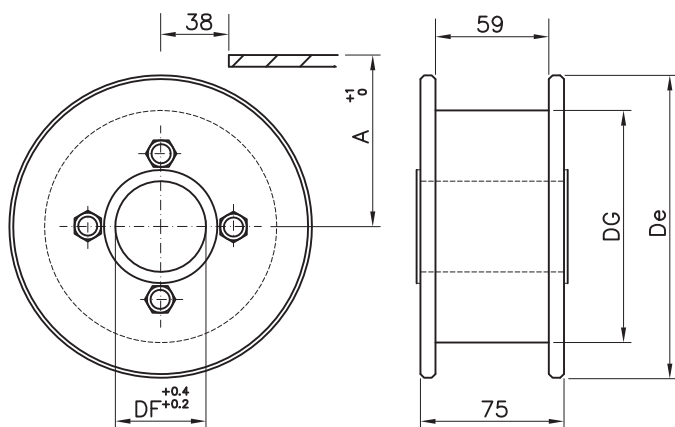
Ruote rinvio intere
 materiale: poliammide - viti in acciaio inox



CODICE	Z	De	Dp	A	B	Df
R00325 25	25	154.0	153.2	79.8	140.1	25
R00325 30						30
R00325 35						35
R00325 40						40

RUOTE RINVIO STAMPATE
Serie 8127/8817M

Ruote rinvio intere autolubrificanti
 materiale: poliammide autolubrificante
 viti in acciaio zincato / colore: nero



CODICE	Z equiv.	De	Dg	A	Df
K00419 25	19	118.0	80.0	62.6	25
K00419 30					30
K00419 35					35
K00419 40					40
K00421 25	21	129.8	80.0	68.6	25
K00421 30					30
K00421 35					35
K00421 40					40
K00423 25	23	142.5	108.0	74.6	25
K00423 30					30
K00423 35					35
K00423 40					40
K00425 25	25	155.0	108.0	80.5	25
K00425 30					30
K00425 35					35
K00425 40					40

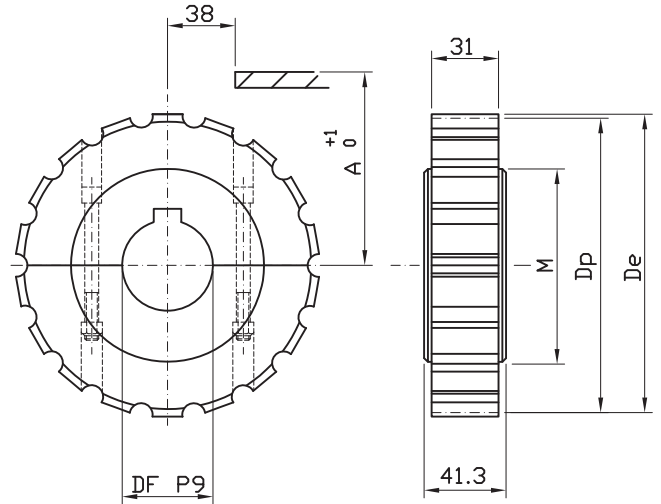


PIGNONI FRESATI

Serie 881/8811/881TAB/8811TAB/8811R-TAB/815TAB

Pignoni in due metà
materiale: poliammide - viti in acciaio inox
sede chiavetta UNI 6604-69

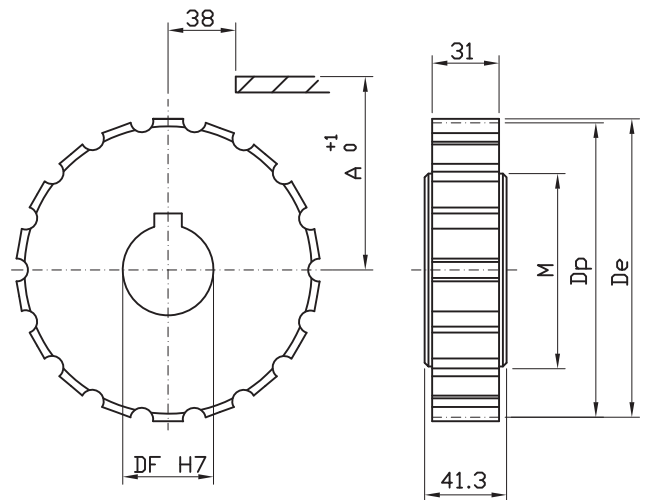
CODICE	Z	De	Dp	A	M	Df
S11417 18	17	103.9	105.47	55.9	60	18*
S11417 25						25
S11417 30						30
S11417 35						35
S11417 40						40
S11419 18	19	117.0	117.34	61.9	70	18*
S11419 25						25
S11419 30						30
S11419 35						35
S11419 40						40
S11421 18	21	129.0	129.26	67.8	75	18*
S11421 25						25
S11421 30						30
S11421 35						35
S11421 40						40
S11423 18	23	142.0	141.21	73.8	80	18*
S11423 25						25
S11423 30						30
S11423 35						35
S11423 40						40
S11425 18	25	154.0	153.21	79.8	90	18*
S11425 25						25
S11425 30						30
S11425 35						35
S11425 40						40
S11427 18	27	166.8	165.2	85.8	100	18*
S11427 25						25
S11427 30						30
S11427 35						35
S11427 40						40
S11429 18	29	178.5	177.24	91.8	110	18*
S11429 25						25
S11429 30						30
S11429 35						35
S11429 40						40



Pignoni interi
materiale: poliammide - viti in acciaio inox
sede chiavetta UNI 6604-69

* foro grezzo

CODICE	Z	De	Dp	A	M	Df
S01417 25	17	103.9	105.47	55.9	60	25
S01417 30						30
S01417 35						35
S01417 40						40
S01419 25						19
S01419 30	30					
S01419 35	35					
S01419 40	40					
S01421 25	21	129.0	129.26	67.8	75	
S01421 30						30
S01421 35						35
S01421 40						40
S01423 25						23
S01423 30	30					
S01423 35	35					
S01423 40	40					
S01425 25	25	154.0	153.21	79.8	90	
S01425 30						30
S01425 35						35
S01425 40						40
S01427 25						27
S01427 30	30					
S01427 35	35					
S01427 40	40					
S01429 25	29	178.5	177.24	91.8	110	
S01429 30						30
S01429 35						35
S01429 40						40

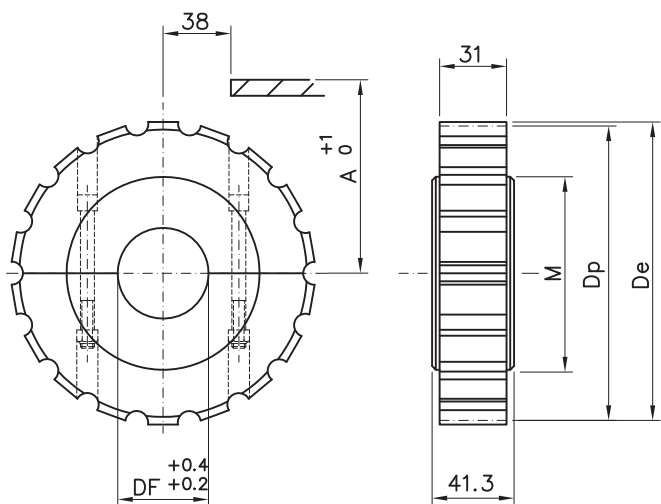


RUOTE RINVIO FRESATE

Serie 881/8811/881TAB/8811TAB/8811R-TAB/815TAB

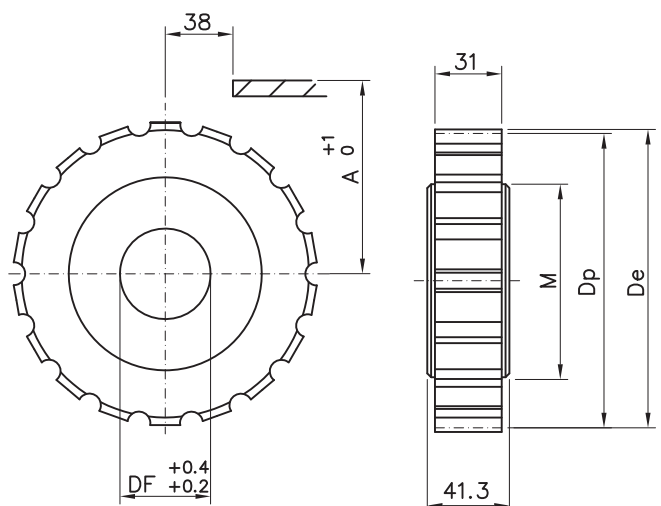


Ruote rinvio in due metà
materiale: poliammide - viti in acciaio inox



CODICE	Z	De	Dp	A	M	Df
R11417 25	17	103.9	105.47	55.9	60.0	25
R11417 30						30
R11417 35						35
R11417 40						40
R11419 25	19	117.0	117.34	61.9	70.0	25
R11419 30						30
R11419 35						35
R11419 40						40
R11421 25	21	129.0	129.26	67.8	75.0	25
R11421 30						30
R11421 35						35
R11421 40						40
R11423 25	23	142.0	141.21	73.8	80.0	25
R11423 30						30
R11423 35						35
R11423 40						40
R11425 25	25	154.0	153.21	79.8	90.0	25
R11425 30						30
R11425 35						35
R11425 40						40
R11427 25	27	166.8	165.2	85.8	100.0	25
R11427 30						30
R11427 35						35
R11427 40						40
R11429 25	29	178.5	177.24	91.8	110.0	25
R11429 30						30
R11429 35						35
R11429 40						40

Ruote rinvio intere
materiale: poliammide



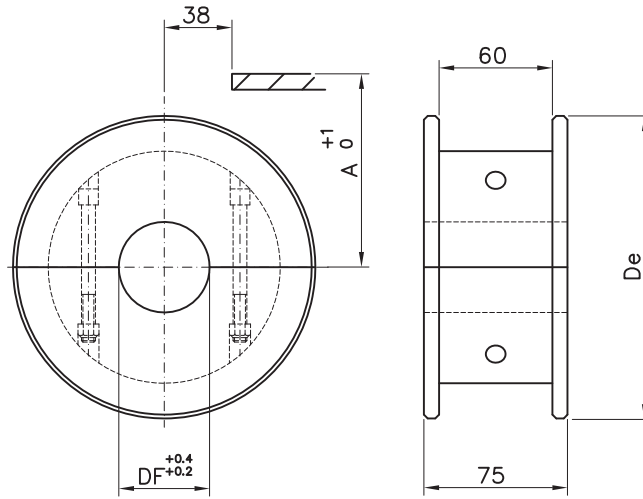
CODICE	Z	De	Dp	A	M	Df
R01417 25	17	104.7	105.48	55.9	60.0	25
R01417 30						30
R01417 35						35
R01417 40						40
R01419 25	19	117.0	117.34	61.9	70.0	25
R01419 30						30
R01419 35						35
R01419 40						40
R01421 25	21	129.0	129.26	67.8	75.0	25
R01421 30						30
R01421 35						35
R01421 40						40
R01423 25	23	142.0	141.21	73.8	80.0	25
R01423 30						30
R01423 35						35
R01423 40						40
R01425 25	25	154.0	153.21	79.8	90.0	25
R01425 30						30
R01425 35						35
R01425 40						40
R01427 25	27	166.8	165.2	85.8	100.0	25
R01427 30						30
R01427 35						35
R01427 40						40
R01429 25	29	178.5	177.24	91.8	110.0	25
R01429 30						30
R01429 35						35
R01429 40						40



RUOTE RINVIO FRESATE
Serie 881TAB/8811TAB/8811R-TAB/815TAB

Ruote rinvio in due metà
 materiale: poliammide - viti in acciaio inox

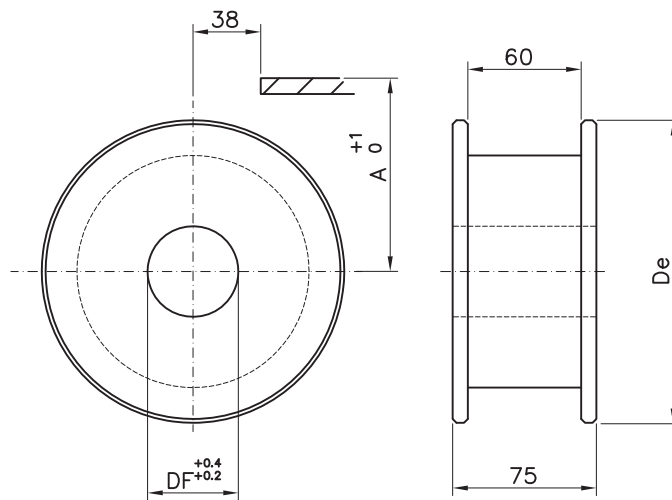
CODICE	Z	De	A	Df
P11417 20	17	104.0	56.2	20
P11417 25				25
P11417 30				30
P11417 35				35
P11417 40				40
P11419 20	19	117.0	62.6	20
P11419 25				25
P11419 30				30
P11419 35				35
P11419 40				40
P11421 20	21	129.8	68.6	20
P11421 25				25
P11421 30				30
P11421 35				35
P11421 40				40
P11423 20	23	142.2	74.6	20
P11423 25				25
P11423 30				30
P11423 35				35
P11423 40				40
P11425 20	25	154.7	80.5	20
P11425 25				25
P11425 30				30
P11425 35				35
P11425 40				40
P11427 20	27	167.2	88.5	20
P11427 25				25
P11427 30				30
P11427 35				35
P11427 40				40



P11429 20	29	179.3	92.8	20
P11429 25				25
P11429 30				30
P11429 35				35
P11429 40				40

Ruote rinvio intere
 materiale: poliammide

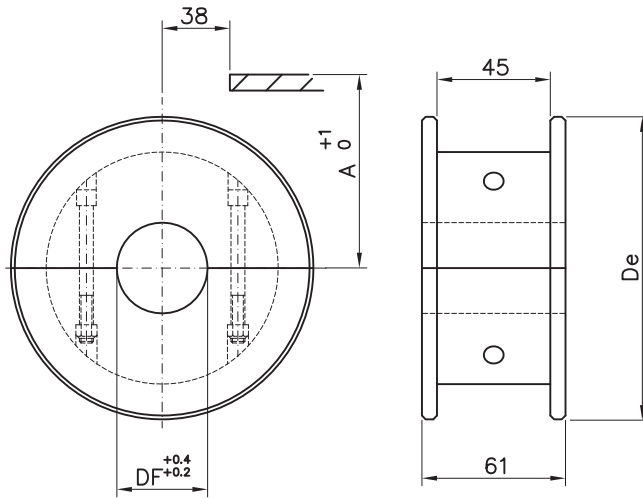
CODICE	Z	De	A	Df
P01417 20	17	104.0	56.2	20
P01417 25				25
P01417 30				30
P01417 35				35
P01417 40				40
P01419 20	19	117.0	62.6	20
P01419 25				25
P01419 30				30
P01419 35				35
P01419 40				40
P01421 20	21	129.8	68.6	20
P01421 25				25
P01421 30				30
P01421 35				35
P01421 40				40
P01423 20	23	142.2	74.6	20
P01423 25				25
P01423 30				30
P01423 35				35
P01423 40				40
P01425 20	25	154.7	80.5	20
P01425 25				25
P01425 30				30
P01425 35				35
P01425 40				40
P01427 20	27	167.2	88.5	20
P01427 25				25
P01427 30				30
P01427 35				35
P01427 40				40



P01429 20	29	179.3	92.8	20
P01429 25				25
P01429 30				30
P01429 35				35
P01429 40				40



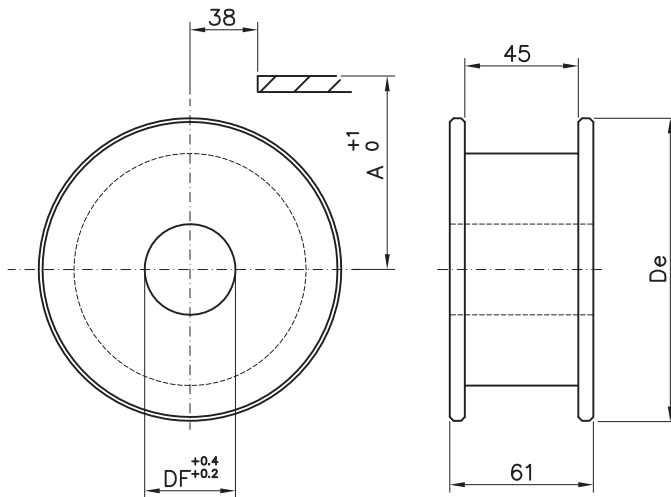
Ruote rinvio in due metà
 materiale: poliammide - viti in acciaio inox



P11629 20	29	179.3	92.8	20
P11629 25				25
P11629 30				30
P11629 35				35
P11629 40				40

CODICE	Z	De	A	Df
P11617 20	17	104.0	56.2	20
P11617 25				25
P11617 30				30
P11617 35				35
P11617 40				40
P11619 20	19	117.0	62.6	20
P11619 25				25
P11619 30				30
P11619 35				35
P11619 40				40
P11621 20	21	129.8	68.6	20
P11621 25				25
P11621 30				30
P11621 35				35
P11621 40				40
P11623 20	23	142.2	74.6	20
P11623 25				25
P11623 30				30
P11623 35				35
P11623 40				40
P11625 20	25	154.7	80.5	20
P11625 25				25
P11625 30				30
P11625 35				35
P11625 40				40
P11627 20	27	167.2	88.5	20
P11627 25				25
P11627 30				30
P11627 35				35
P11627 40				40

Ruote rinvio intere
 materiale: poliammide



P01629 20	29	179.3	92.8	20
P01629 25				25
P01629 30				30
P01629 35				35
P01629 40				40

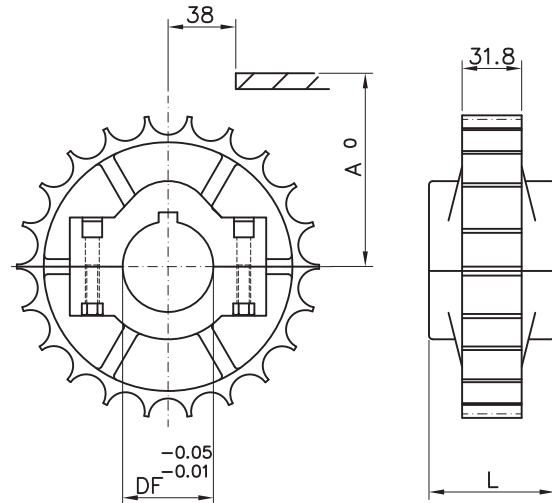
CODICE	Z	De	A	Df
P01617 20	17	104.0	56.2	20
P01617 25				25
P01617 30				30
P01617 35				35
P01617 40				40
P01619 20	19	117.0	62.6	20
P01619 25				25
P01619 30				30
P01619 35				35
P01619 40				40
P01621 20	21	129.8	68.6	20
P01621 25				25
P01621 30				30
P01621 35				35
P01621 40				40
P01623 20	23	142.2	74.6	20
P01623 25				25
P01623 30				30
P01623 35				35
P01623 40				40
P01625 20	25	154.7	80.5	20
P01625 25				25
P01625 30				30
P01625 35				35
P01625 40				40
P01627 20	27	167.2	88.5	20
P01627 25				25
P01627 30				30
P01627 35				35
P01627 40				40



RUOTE TRAINO STAMPATE
Serie 881/8811/881TAB/8811TAB

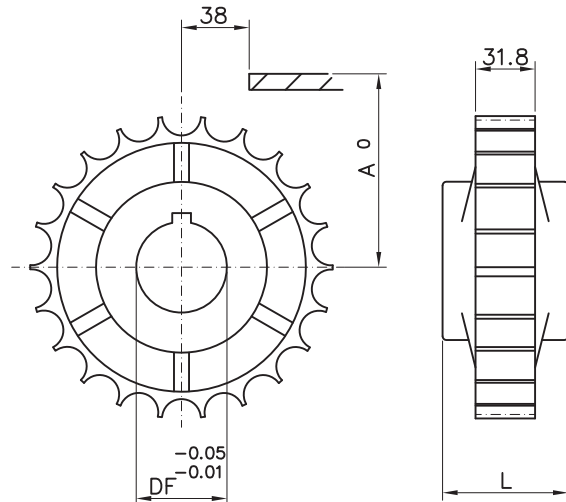
Pignoni in due metà
 materiale: poliammide rinforzato - viti in acciaio inox,
 dadi in ottone nichelato / sede chiavetta UNI 6604-69

CODICE	Z	De	A	B	L	Df
S10421 25	21	129.0	67.8	116.1	51.0	25
S10421 30						30
S10421 35						35
S10421 40						40
S10421 45						45
S10423 25	23	142.0	73.8	128.1	51.0	25
S10423 30						30
S10423 35						35
S10423 40						40
S10423 45						45
S10425 25	25	154.0	79.8	140.1	58.5	25
S10425 30						30
S10425 35						35
S10425 40						40
S10425 45						45



Pignoni interi
 materiale: poliammide
 sede chiavetta UNI 6604-69

CODICE	Z	De	Dp	A	L	Df
S00421 25	21	129.0	129.26	67.8	51.0	25
S00421 30						30
S00421 35						35
S00421 40						40
S00425 25	25	154.0	153.2	79.8	58.5	25
S00425 30						30
S00425 35						35
S00425 40						40

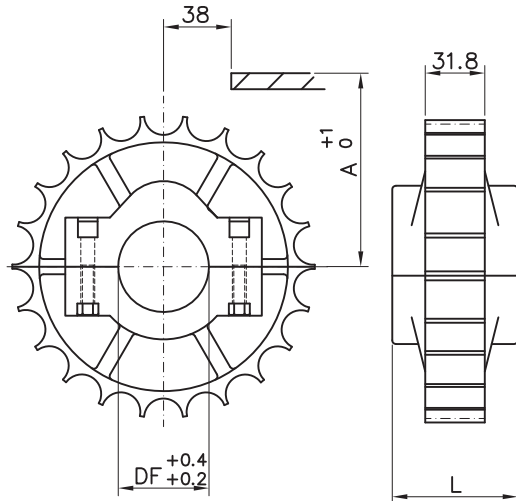


RUOTE RINVIO STAMPATE

Serie 881/8811/881TAB/8811TAB/8811R-TAB/815TAB

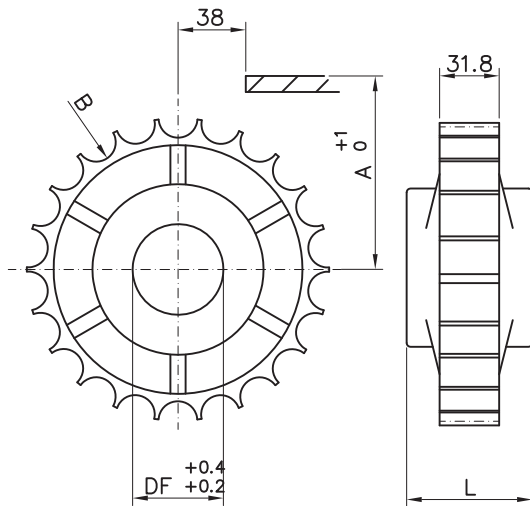


Ruote rinvio in due metà
 materiale: poliammide - viti in acciaio inox,
 dadi in ottone nichelato / colore: nero



CODICE	Z	De	A	B	L	Df
R10421 25						25
R10421 30						30
R10421 35	21	129.0	67.8	116.1	51.0	35
R10421 40						40
R10421 45						45
R10423 25						25
R10423 30						30
R10423 35	23	142.0	73.8	128.1	51.0	35
R10423 40						40
R10423 45						45
R10425 25						25
R10425 30						30
R10425 35	25	154.0	79.8	140.1	58.5	35
R10425 40						40
R10425 45						45

Ruote rinvio intere
 materiale: poliammide
 colore: nero

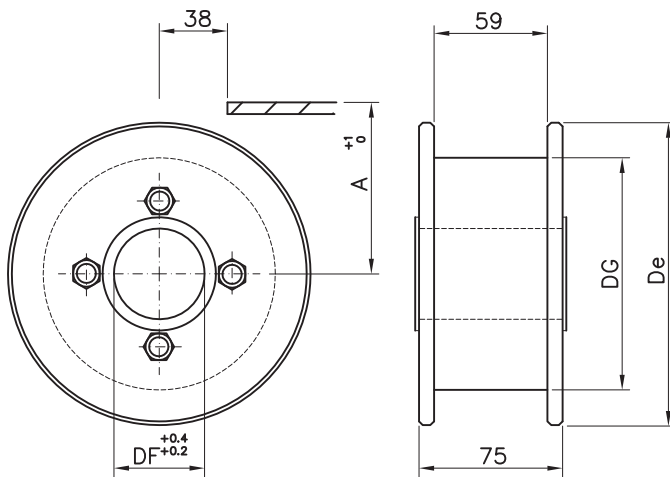


CODICE	Z	De	Dp	A	L	Df
R00421 25						25
R00421 30						30
R00421 35	21	129.0	129.26	67.8	51.0	35
R00421 40						40
R00425 25						25
R00425 30						30
R00425 35	25	154.0	153.2	79.8	58.5	35
R00425 40						40

RUOTE RINVIO STAMPATE

Serie 881TAB/8811TAB/8811R-TAB/815TAB

Ruote rinvio intere autolubrificanti
 materiale: poliammide autolubrificante -
 viti in acciaio zincato / colore: nero



CODICE	Z equiv.	De	Dg	A	Df
K00419 25					25
K00419 30					30
K00419 35	19	118.0	80.0	62.6	35
K00419 40					40
K00421 25					25
K00421 30					30
K00421 35	21	129.8	80.0	68.6	35
K00421 40					40
K00423 25					25
K00423 30					30
K00423 35	23	142.5	108.0	74.6	35
K00423 40					40
K00425 25					25
K00425 30					30
K00425 35	25	155.0	108.0	80.5	35
K00425 40					40

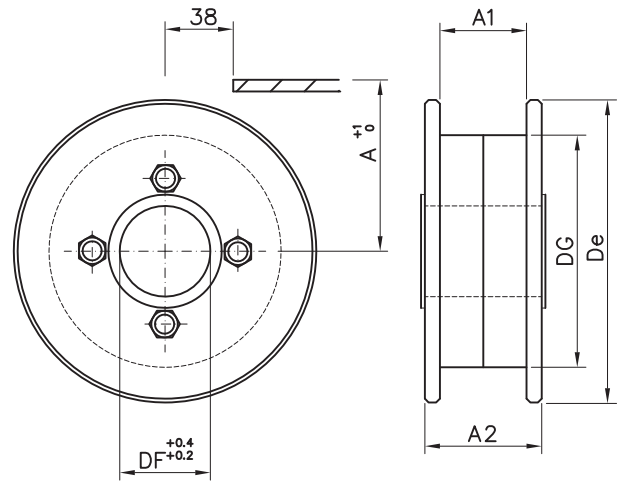


RUOTE RINVIO STAMPATE
Serie 881/8811

Ruote rinvio intere autolubrificanti

materiale: poliammide autolubr. - viti in acc. zincato / colore: nero

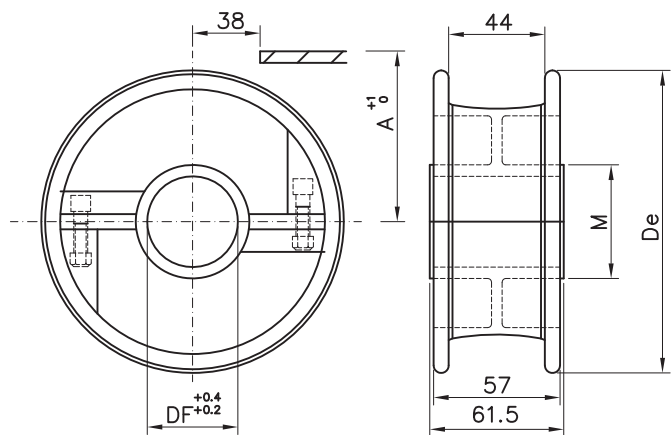
CODICE	Z equiv.	De	Dg	A	A1	A2	Df
K00615 30	15	90.0	58.0	48.2	48.0	83.0	30
K00615 35							35
K00615 40							40
K00615 45							45
K00617 25	17	106.0	71.0	56.2	44.0	52.0	25
K00617 30							30
K00619 25							25
K00619 30	19	118.0	80.0	62.6	44.0	60.0	30
K00619 35							35
K00619 40							40
K00621 25							25
K00621 30	21	129.8	80.0	68.6	44.0	60.0	30
K00621 35							35
K00621 40							40
K00623 25							25
K00623 30	23	142.5	108.0	74.6	44.0	60.0	30
K00623 35							35
K00623 40							40
K00625 25	25	155.0	108.0	80.5	44.0	60.0	25
K00625 30							30
K00625 35							35
K00625 40							40



Ruote rinvio in due metà

materiale: poliammide autolubrificante / colore: nero

CODICE	Z equiv.	De	A	Df
P10621 25	21	129.8	48.2	25
P10621 30				30
P10621 35				35
P10621 40				40
P10623 25	23	142.5	74.6	25
P10623 30				30
P10623 35				35
P10623 40				40
P10625 25	25	154.5	80.5	25
P10625 30				30
P10625 35				35
P10625 40				40



Ruote rinvio intere

materiale: poliammide autolubrificante

colore: nero

CODICE	Z equiv.	De	A	Df
P00615 25	15	95.5	92.0	25
P00615 30				30
P00617 25	17	106.5	57.0	25
P00617 30				30
P00618 25	18	113.0	92.0	25
P00618 30				30
P00619 20	19	117.0	62.6	20
P00619 25				25
P00619 30				30
P00619 35				35
P00619 40	40			
P00621 20	21	129.8	68.6	20
P00621 25				25
P00621 30				30
P00621 35				35
P00621 40	40			
P00623 20	23	142.2	74.6	20
P00623 25				25
P00623 30				30
P00623 35				35
P00623 40	40			
P00625 20	25	154.7	80.5	20
P00625 25				25
P00625 30				30
P00625 35				35
P00625 40	40			

