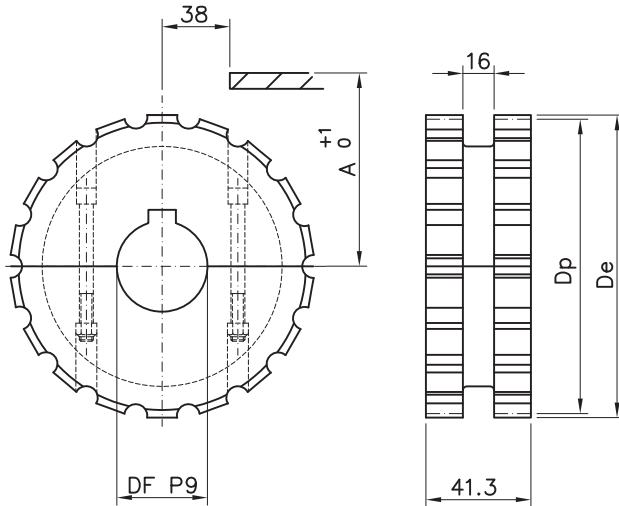


- 27** Serie 820/831/LBP831  
Pignoni fresati
- 28** Serie 820/831/LBP831  
Ruote rinvio fresate
- 30** Serie 820  
Ruote traino e rinvio stampate
- 30** Serie 820  
Ruote traino stampate
- 31** Serie 831/LBP831  
Ruote traino stampate
- 31** Serie 820/831/LBP831  
Ruote rinvio stampate
- 32** Serie 821/LBP821  
Pignoni fresati
- 33** Serie 821/LBP821  
Ruote rinvio fresate
- 34** Serie 821/LBP821  
Ruote traino e rinvio stampate
- 35** Serie 821/LBP821  
Ruote rinvio stampate
- 36** Serie 878TAB/879/879M/879TAB/880/880TAB/880M  
Pignoni fresati
- 37** Serie 878TAB/879/879M/879TAB/880/880TAB/880M  
Ruote rinvio fresate
- 38** Serie 879/879M/880/880M  
Ruote rinvio fresate
- 39** Serie 878TAB/879TAB/880TAB  
Ruote rinvio fresate
- 40** Serie 878TAB/879TAB/880TAB  
Pignoni e ruote rinvio stampate
- 41** Serie 879/879M/880/880M  
Ruote rinvio stampate
- 41** Serie 878TAB/879TAB/880TAB  
Ruote rinvio stampate
- 42** Serie 882/882TAB/882M/8257/LBP8257/  
LBP882M/LBP882TAB  
Pignoni fresati
- 43** Serie 882/882TAB/882M/8257/LBP8257/  
LBP882M/LBP882TAB  
Ruote rinvio fresate
- 44** Serie 882TAB/LBP882TAB  
Ruote rinvio fresate
- 45** Serie 882M/8257/LBP8257/LBP882M  
Ruote rinvio fresate
- 46** Serie 882/882TAB/882M/8257/LBP8257  
Pignoni e ruote rinvio stampate
- 47** Serie 882M/8257/LBP8257/LBP882M  
Ruote rinvio stampate
- 47** Serie 882TAB/LBP882TAB  
Ruote rinvio stampate
- 48** Serie 780M/780MFG/780TAB/780FGTAB/790TAB  
Pignoni e ruote rinvio stampate
- 48** Serie 780M/780MFG/780TAB/780FGTAB/790TAB  
Pignoni fresati
- 49** Serie 1700/1701/1702  
Pignoni e ruote rinvio fresate
- 50** Serie 1700/1701/1702  
Pignoni e ruote rinvio stampate
- 50** Serie 1700/1701/1702  
Pignoni e ruote rinvio fresate
- 51** Serie 600  
Pignoni e ruote rinvio fresate
- 51** Serie 1400  
Pignoni e ruote rinvio fresate
- 52** Dimensioni e tolleranze chiavette  
UNI 6604-69/ISO773/DIN6885
- 54** Serie 780/790/878/879/880/881/8811  
Guide curve per catene TAB
- 56** Serie 878/879/880/881/8811  
Guide curve per catene 8° tipo Bevel
- 58** Serie 882TAB/LBP882TAB  
Guide curve per catene TAB
- 59** Serie 882TAB/882  
Guide curve per catene
- 60** Serie 882  
Guide curve per catene 8° tipo Bevel
- 61** Serie 1873/1874  
Guide curve per catene TAB
- 62** Serie 1700/1700TAB/1701TAB/1702  
Guide curve per catene Multiflex
- 64** Serie 780TAB/790TAB/880TAB/881TAB/8811TAB  
882TAB/1873TAB/1874TAB  
Guide rettilinee per catene TAB
- 64** Serie 878/879/880/881/8811/882  
Guide rettilinee per catene 8° tipo Bevel
- 66** Profili guida per catene di trasporto
- 68** Profili metallici
- 70** Nastri trasporto
- 70** Disegno del trasportatore
- 72** Credits

**PIGNONI FRESATI**  
**Serie 820/831/LBP831**



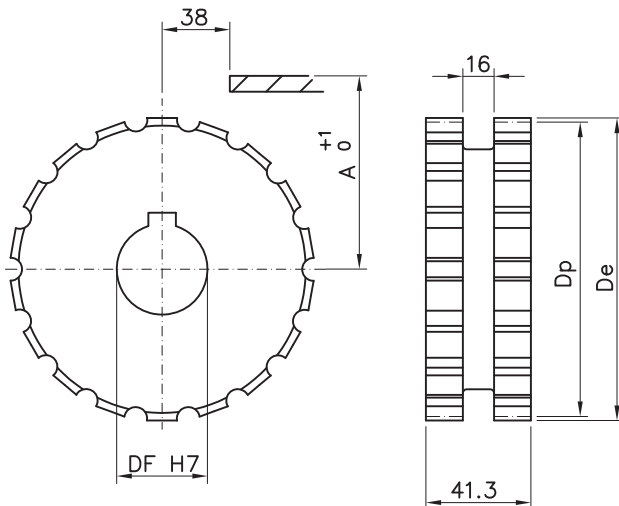
Pignoni in due metà  
 materiale: poliammide - viti in acciaio inox  
 sede chiavetta UNI 6604-69



CODICE	Z	De	Dp	A	Df
S11617 18	17	103.9	105.47	55.9	18*
S11617 25					25
S11617 30					30
S11617 35					35
S11617 40					40
S11619 18	19	117.0	117.34	61.9	18*
S11619 25					25
S11619 30					30
S11619 35					35
S11619 40					40
S11621 18	21	129.0	129.26	67.8	18*
S11621 25					25
S11621 30					30
S11621 35					35
S11621 40					40
S11623 18	23	142.0	141.21	73.8	18*
S11623 25					25
S11623 30					30
S11623 35					35
S11623 40					40
S11625 18	25	154.0	153.21	79.8	18*
S11625 25					25
S11625 30					30
S11625 35					35
S11625 40					40
S11627 18	27	166.8	165.2	85.8	18*
S11627 25					25
S11627 30					30
S11627 35					35
S11627 40					40
S11629 18	29	178.5	177.24	91.8	18*
S11629 25					25
S11629 30					30
S11629 35					35
S11629 40					40

Pignoni interi  
 materiale: poliammide  
 sede chiavetta UNI 6604-69

\* foro grezzo



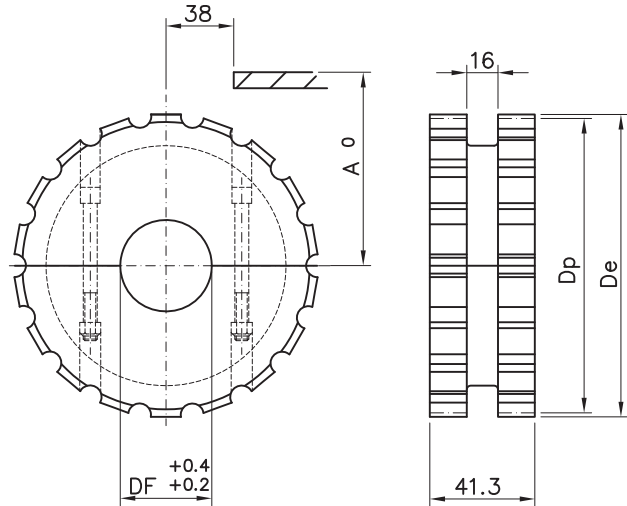
CODICE	Z	De	Dp	A	Df
S01617 25	17	103.9	105.47	55.9	25
S01617 30					30
S01617 35					35
S01617 40					40
S01619 25	19	117.0	117.34	61.9	25
S01619 30					30
S01619 35					35
S01619 40					40
S01621 25	21	129.0	129.26	67.8	25
S01621 30					30
S01621 35					35
S01621 40					40
S01623 25	23	142.0	141.21	73.8	25
S01623 30					30
S01623 35					35
S01623 40					40
S01625 25	25	154.0	153.21	79.8	25
S01625 30					30
S01625 35					35
S01625 40					40
S01627 25	27	166.8	165.2	85.8	25
S01627 30					30
S01627 35					35
S01627 40					40
S01629 25	29	178.5	177.24	91.8	25
S01629 30					30
S01629 35					35
S01629 40					40



**RUOTE RINVIO FRESATE**  
**Serie 820/831/LBP831**

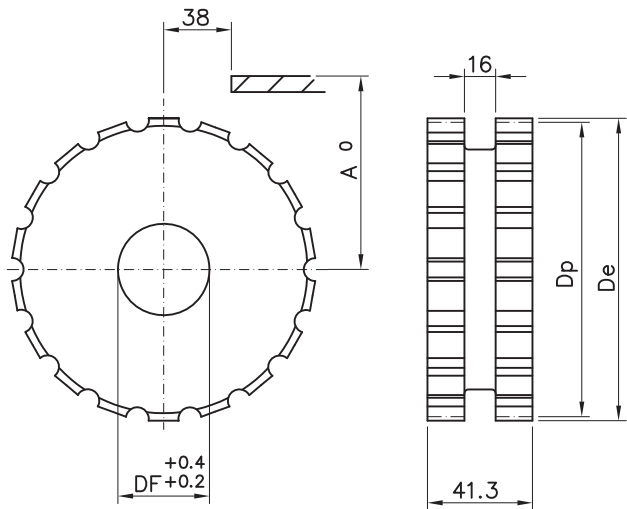
Ruote rinvio in due metà  
 materiale: poliammide - viti in acciaio inox

CODICE	Z	De	Dp	A	Df
R11617 25	17	103.9	105.47	55.9	25
R11617 30					30
R11617 35					35
R11617 40					40
R11619 25	19	117.0	117.34	61.9	25
R11619 30					30
R11619 35					35
R11619 40					40
R11621 25	21	129.0	129.26	67.8	25
R11621 30					30
R11621 35					35
R11621 40					40
R11623 25	23	142.0	141.21	73.8	25
R11623 30					30
R11623 35					35
R11623 40					40
R11625 25	25	154.0	153.21	79.8	25
R11625 30					30
R11625 35					35
R11625 40					40
R11627 25	27	166.8	165.2	85.8	25
R11627 30					30
R11627 35					35
R11627 40					40
R11629 25	29	178.5	177.24	91.8	25
R11629 30					30
R11629 35					35
R11629 40					40



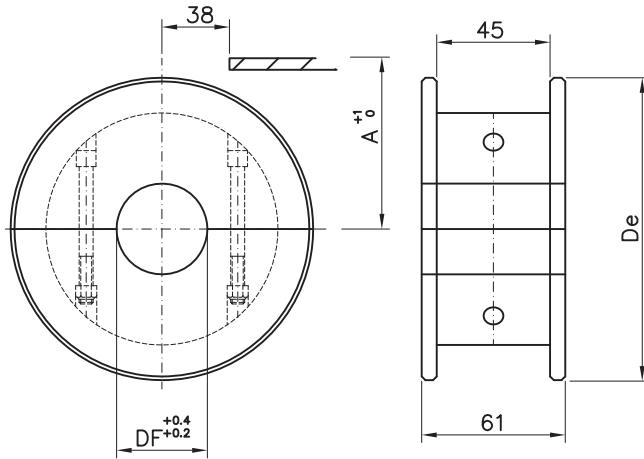
Ruote rinvio intere  
 materiale: poliammide

CODICE	Z	De	Dp	A	Df
R01617 25	17	103.9	105.47	55.9	25
R01617 30					30
R01617 35					35
R01617 40					40
R01619 25	19	117.0	117.34	61.9	25
R01619 30					30
R01619 35					35
R01619 40					40
R01621 25	21	129.0	129.26	67.8	25
R01621 30					30
R01621 35					35
R01621 40					40
R01623 25	23	142.0	141.21	73.8	25
R01623 30					30
R01623 35					35
R01623 40					40
R01625 25	25	154.0	153.21	79.8	25
R01625 30					30
R01625 35					35
R01625 40					40
R01627 25	27	166.8	165.2	85.8	25
R01627 30					30
R01627 35					35
R01627 40					40
R01629 25	29	178.5	177.24	91.8	25
R01629 30					30
R01629 35					35
R01629 40					40





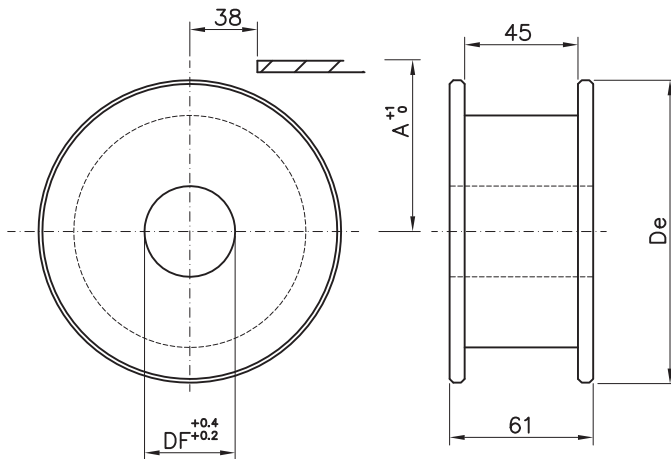
Ruote rinvio in due metà  
 materiale: poliammide - viti in acciaio inox



P11629 20	29	179.3	92.8	20
P11629 25				25
P11629 30				30
P11629 35				35
P11629 40				40

CODICE	Z	De	A	Df
P11617 20	17	104.0	56.2	20
P11617 25				25
P11617 30				30
P11617 35				35
P11617 40				40
P11619 20	19	117.0	62.6	20
P11619 25				25
P11619 30				30
P11619 35				35
P11619 40				40
P11621 20	21	129.8	68.6	20
P11621 25				25
P11621 30				30
P11621 35				35
P11621 40				40
P11623 20	23	142.2	74.6	20
P11623 25				25
P11623 30				30
P11623 35				35
P11623 40				40
P11625 20	25	154.7	80.5	20
P11625 25				25
P11625 30				30
P11625 35				35
P11625 40				40
P11627 20	27	167.2	88.5	20
P11627 25				25
P11627 30				30
P11627 35				35
P11627 40				40

Ruote rinvio intere  
 materiale: poliammide



P01629 20	29	179.3	92.8	20
P01629 25				25
P01629 30				30
P01629 35				35
P01629 40				40

CODICE	Z	De	A	Df
P01617 20	17	104.0	56.2	20
P01617 25				25
P01617 30				30
P01617 35				35
P01617 40				40
P01619 20	19	117.0	62.6	20
P01619 25				25
P01619 30				30
P01619 35				35
P01619 40				40
P01621 20	21	129.8	68.6	20
P01621 25				25
P01621 30				30
P01621 35				35
P01621 40				40
P01623 20	23	142.2	74.6	20
P01623 25				25
P01623 30				30
P01623 35				35
P01623 40				40
P01625 20	25	154.7	80.5	20
P01625 25				25
P01625 30				30
P01625 35				35
P01625 40				40
P01627 20	27	167.2	88.5	20
P01627 25				25
P01627 30				30
P01627 35				35
P01627 40				40

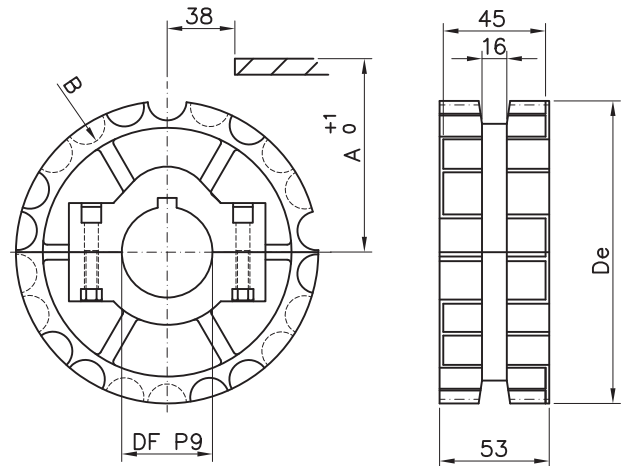


## RUOTE TRAINO E RINVIO STAMPATE Serie 820

Pignoni in due metà

materiale: poliammide rinforzato - viti in acciaio inox,  
dadi in ottone nichelato / sede chiavetta UNI 6604-69

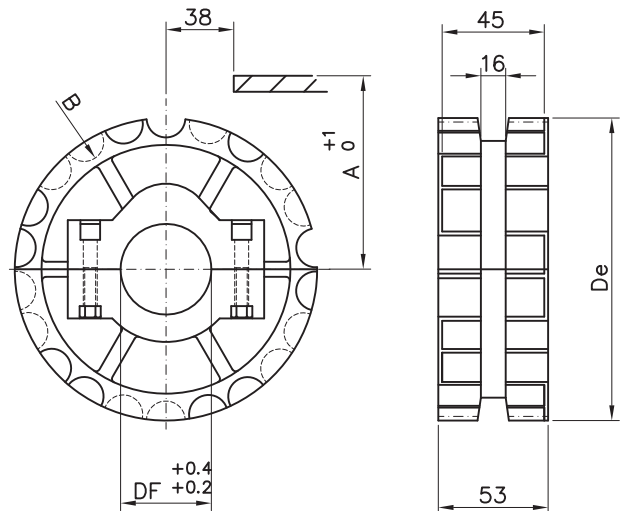
CODICE	Z	De	B	A	Df
S10621 25	21	129.0	116.1	67.8	25
S10621 30					30
S10621 35					35
S10621 40					40
S10621 45					45
S10623 25	23	142.0	128.1	73.8	25
S10623 30					30
S10623 35					35
S10623 40					40
S10623 45					45
S10625 25	25	154.0	140.1	79.8	25
S10625 30					30
S10625 35					35
S10625 40					40
S10625 45					45



Ruote rinvio in due metà

materiale: poliammide - viti in acciaio inox,  
dadi in ottone nichelato

CODICE	Z	De	B	A	Df
R10621 25	21	129.0	116.1	67.8	25
R10621 30					30
R10621 35					35
R10621 40					40
R10621 45					45
R10623 25	23	142.0	128.1	73.8	25
R10623 30					30
R10623 35					35
R10623 40					40
R10623 45					45
R10625 25	25	154.0	140.1	79.8	25
R10625 30					30
R10625 35					35
R10625 40					40
R10625 45					45

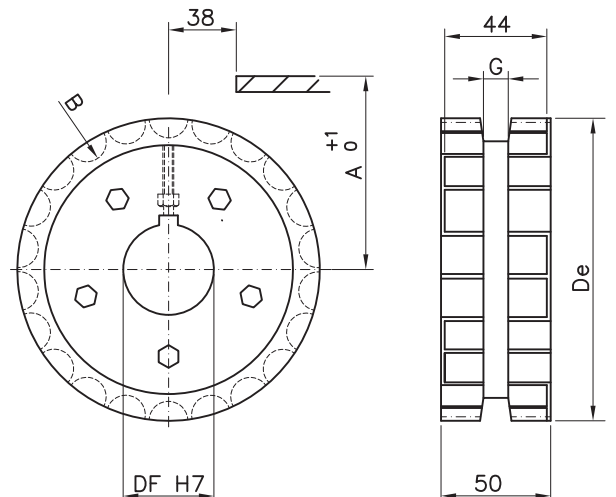


## PIGNONI STAMPATI Serie 820

Pignoni interi

materiale: poliammide rinforzata - viti in acciaio inox  
sede chiavetta UNI 6604-69

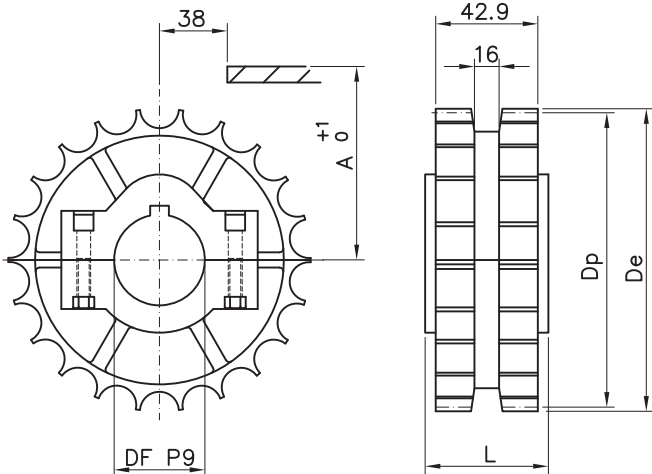
CODICE	Z	De	Dp	A	B	G	Df
S00615 25	15	92.2	93.67	-	-	-	25
S00615 30							30
S00617 25	17	103.9	105.47	56.0	92.3	13.0	25
S00617 30							30
S00619 25	19	117.0	117.34	62.0	104.2	16.0	25
S00619 30							30
S00619 35							35
S00619 40							40
S00621 25							21
S00621 30	30						
S00621 35	35						
S00621 40	40						
S00623 25	23	142.0	141.21	74.0	128.1	16.0	25
S00623 30							30
S00623 35							35
S00623 40							40
S00625 25							25
S00625 30	30						
S00625 35	35						
S00625 40	40						



**RUOTE TRAINO STAMPATE**  
**Serie 831/LBP831**



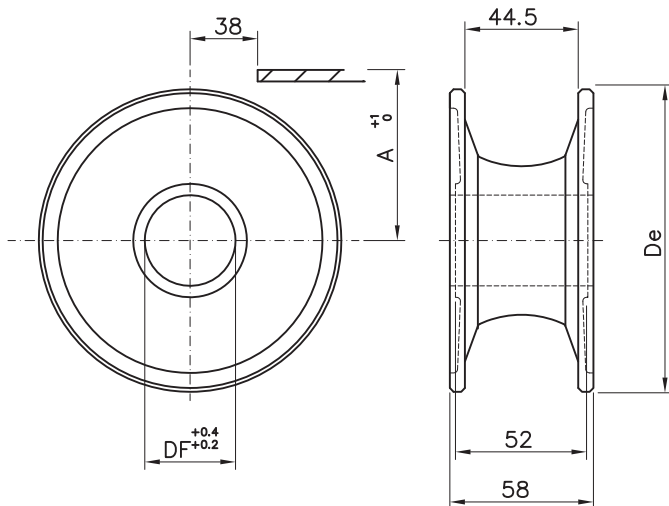
Pignoni in due metà  
 materiale: poliammide rinforzato - viti in acciaio inox,  
 dadi in ottone nichelato / sede chiave: UNI 6604-69



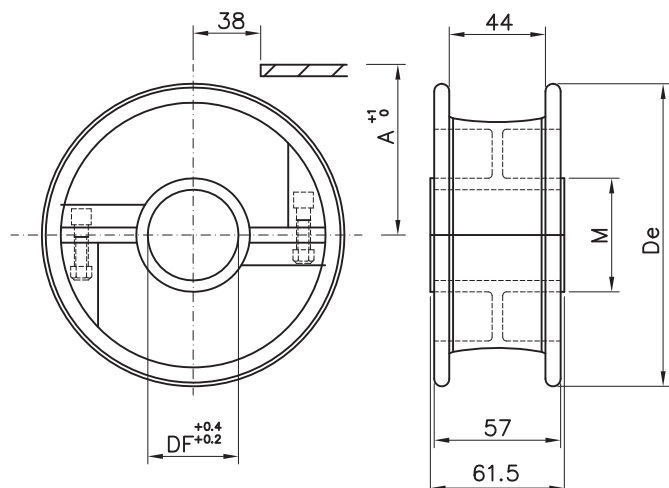
CODICE	Z	De	Dp	A	L	Df
D10621 25	21	129.5	129.26	67.8	51.0	25
D10621 30						30
D10621 35						35
D10621 40						40
D10621 45						45
D10623 25	23	142.0	141.22	73.8	51.0	25
D10623 30						30
D10623 35						35
D10623 40						40
D10623 45						45
D10625 25	25	154.2	153.21	79.8	58.5	25
D10625 30						30
D10625 35						35
D10625 40						40
D10625 45						45

**RUOTE RINVIO STAMPATE**  
**Serie 820/831/LBP831**

Ruote rinvio intere  
 materiale: poliammide autolubrificante  
 colore: nero



CODICE	Z equiv.	De	A	Df
P00615 25	15	95.5	92.0	25
P00615 30				30
P00617 25	17	106.5	57.0	25
P00617 30				30
P00618 25	18	113.0	92.0	25
P00618 30				30
P00619 20	19	117.0	62.6	20
P00619 25				25
P00619 30				30
P00619 35				35
P00619 40				40
P00621 20	21	129.8	68.6	20
P00621 25				25
P00621 30				30
P00621 35				35
P00621 40				40
P00623 20	23	142.2	74.6	20
P00623 25				25
P00623 30				30
P00623 35				35
P00623 40				40
P00625 20	25	154.7	80.5	20
P00625 25				25
P00625 30				30
P00625 35				35
P00625 40				40

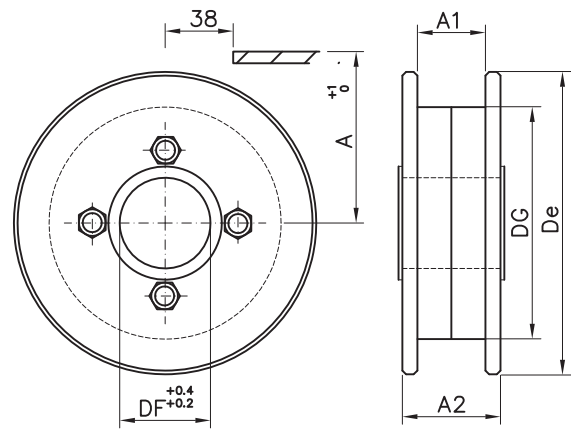


Ruote rinvio in due metà  
 materiale: poliammide autolubrificante - viti  
 in acciaio inox  
 colore: nero

CODICE	Z equiv.	De	A	M	Df
P10621 25	21	130.0	48.2	35	25
P10621 30				40	30
P10621 35				45	35
P10621 40				50	40
P10623 25	23	142.5	74.6	40	25
P10623 30				40	30
P10623 35				50	35
P10623 40				50	40
P10625 25	25	154.5	80.5	35	25
P10625 30				40	30
P10625 35				45	35
P10625 40				50	40

Ruote rinvio intere  
 materiale: poliammide autolubrificante / colore: nero

CODICE	Z equiv.	De	Dg	A	A1	A2	Df
K00615 30	15	90.0	58.0	48.2	48.0	83.0	30
K00615 35							35
K00615 40							40
K00615 45							45
K00617 25	17	106.0	71.0	56.2	44.0	52.0	25
K00617 30							30
K00619 25							25
K00619 30							30
K00619 35	19	118.0	80.0	62.6	44.0	60.0	35
K00619 40							40
K00621 25							25
K00621 30							30
K00621 35	21	129.8	80.0	68.6	44.0	60.0	35
K00621 40							40
K00623 25							25
K00623 30							30
K00623 35	23	142.5	108.0	74.6	44.0	60.0	35
K00623 40							40

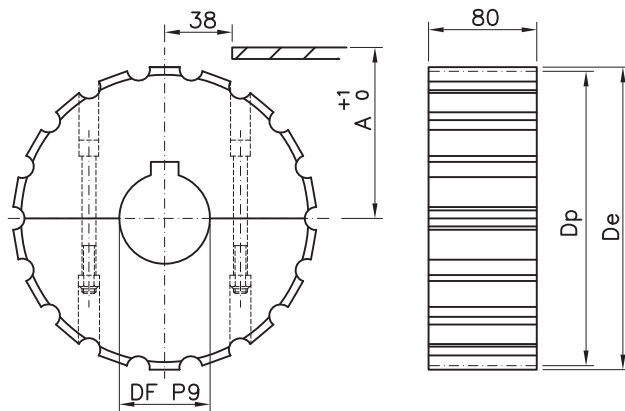


K00625 25	25	155.0	108.0	74.6	44.0	60.0	25
K00625 30							30
K00625 35							35
K00625 40							40

**PIGNONI FRESATI**  
**Serie 821/LBP821**

Pignoni in due metà  
 materiale: poliammide - viti in acciaio inox / sede chiavetta UNI 6604-69

CODICE	Z	De	Dp	A	Df
S11719 18	19	117.0	117.34	61.9	18*
S11719 25					25
S11719 30					30
S11719 35					35
S11719 40					40
S11721 18	21	129.0	129.26	67.8	18*
S11721 25					25
S11721 30					30
S11721 35					35
S11721 40					40
S11723 18	23	142.0	141.21	73.8	18*
S11723 25					25
S11723 30					30
S11723 35					35
S11723 40					40
S11725 18	25	154.0	153.21	79.8	18*
S11725 25					25
S11725 30					30
S11725 35					35
S11725 40					40

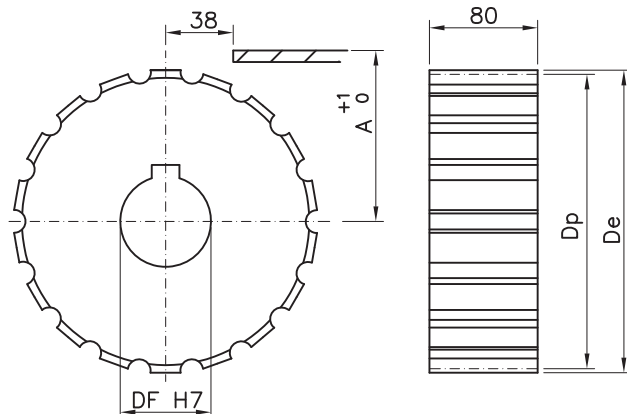


S11727 18	27	166.8	165.2	85.8	18*
S11727 25					25
S11727 30					30
S11727 35					35
S11727 40					40
S11729 18	29	178.5	177.24	91.8	18*
S11729 25					25
S11729 30					30
S11729 35					35
S11729 40					40

\* foro grezzo

Pignoni interi  
 materiale: poliammide / sede chiavetta UNI 6604-69

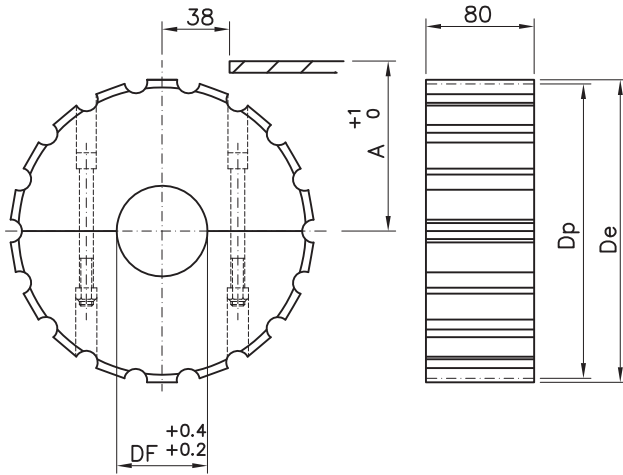
CODICE	Z	De	Dp	A	Df
S01719 25	19	117.0	117.34	61.9	25
S01719 30					30
S01719 35					35
S01719 40					40
S01721 25					21
S01721 30	30				
S01721 35	35				
S01721 40	40				
S01723 25	23	142.0	141.21	73.8	
S01723 30					30
S01723 35					35
S01723 40					40
S01725 25					25
S01725 30	30				
S01725 35	35				
S01725 40	40				
S01727 25	27	166.8	165.2	85.8	
S01727 30					30
S01727 35					35
S01727 40					40



S01729 25	29	178.5	177.24	91.8	25
S01729 30					30
S01729 35					35
S01729 40					40

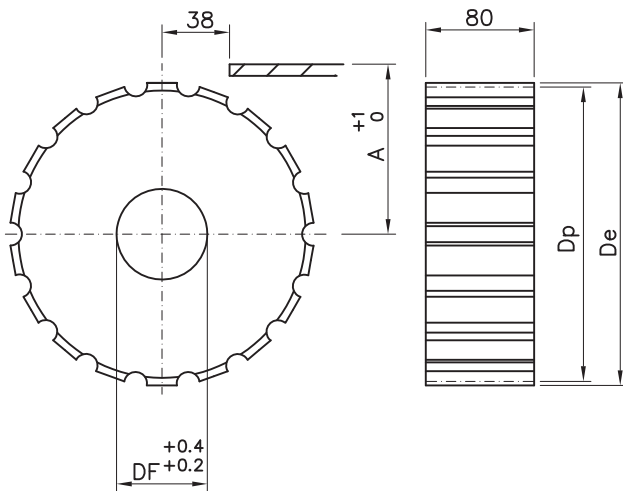


Ruote rinvio in due metà  
 materiale: poliammide - viti in acciaio inox

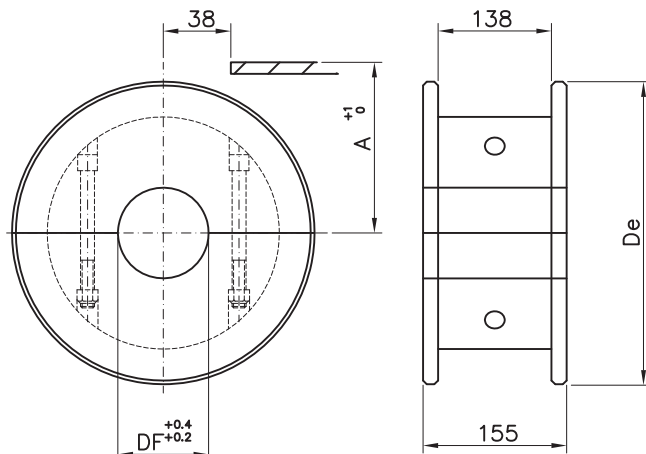


CODICE	Z	De	Dp	A	Df
R11719 25	19	117.0	117.34	61.9	25
R11719 30					30
R11719 35					35
R11719 40					40
R11721 25	21	129.0	129.26	67.8	25
R11721 30					30
R11721 35					35
R11721 40					40
R11723 25	23	142.0	141.21	73.8	25
R11723 30					30
R11723 35					35
R11723 40					40
R11725 25	25	154.0	153.21	79.8	25
R11725 30					30
R11725 35					35
R11725 40					40
R11727 25	27	166.8	165.2	85.8	25
R11727 30					30
R11727 35					35
R11727 40					40
R11729 25	29	178.5	177.24	91.8	25
R11729 30					30
R11729 35					35
R11729 40					40

Ruote rinvio intere  
 materiale: poliammide



CODICE	Z	De	Dp	A	Df
R01719 25	19	117.0	117.34	61.9	25
R01719 30					30
R01719 35					35
R01719 40					40
R01721 25	21	129.0	129.26	67.8	25
R01721 30					30
R01721 35					35
R01721 40					40
R01723 25	23	142.0	141.21	73.8	25
R01723 30					30
R01723 35					35
R01723 40					40
R01725 25	25	154.0	153.21	79.8	25
R01725 30					30
R01725 35					35
R01725 40					40
R01727 25	27	166.8	165.20	85.8	25
R01727 30					30
R01727 35					35
R01727 40					40
R01729 25	29	178.5	177.24	91.8	25
R01729 30					30
R01729 35					35
R01729 40					40



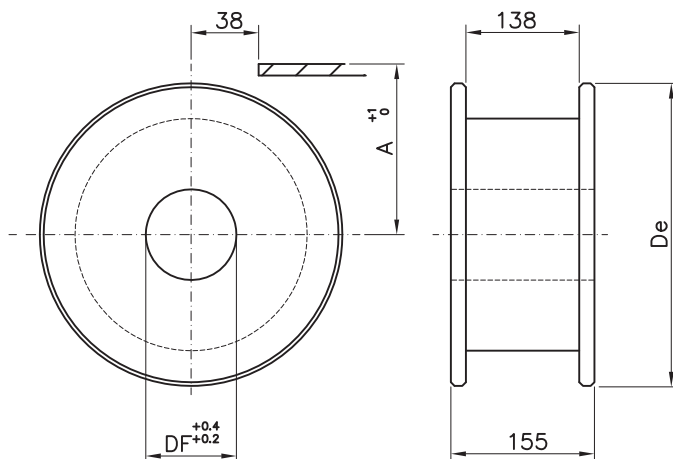
Ruote rinvio in due metà  
 materiale: poliammide - viti in acciaio inox

CODICE	Z equiv.	De	A	Df
P11719 30	19	117.0	62.6	30
P11719 35				35
P11719 40				40
P11721 30	21	129.8	68.6	30
P11721 35				35
P11721 40				40
P11723 30	23	142.2	74.6	30
P11723 35				35
P11723 40				40
P11725 30	25	154.7	80.5	30
P11725 35				35
P11725 40				40



Ruote rinvio intere  
 materiale: poliammide

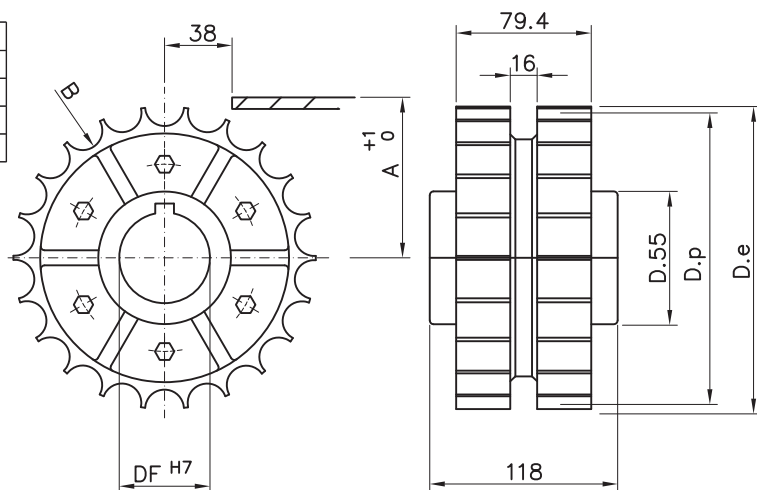
CODICE	Z equiv.	De	A	Df
P01719 30	19	117.0	62.6	30
P01719 35				35
P01719 40				40
P01721 30	21	129.8	68.6	30
P01721 35				35
P01721 40				40
P01723 30	23	142.2	74.6	30
P01723 35				35
P01723 40				40
P01725 30	25	154.7	80.5	30
P01725 35				35
P01725 40				40



**RUOTE TRAINO E RINVIO STAMPATE**  
**Serie 821/LBP821**

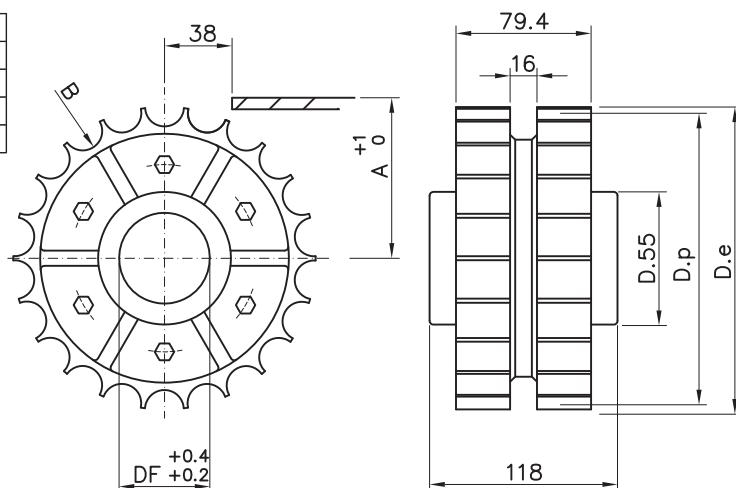
Pignone in pezzo unico  
 materiale: poliammide rinforzato - viti in acciaio inox  
 sede chiavetta UNI 6604-69

CODICE	Z	De	Dp	A	B	Df
S00725 25	25	154.0	153.2	79.8	140.1	25
S00725 30						30
S00725 35						35
S00725 40						40



Ruote rinvio intere  
 materiale: poliammide - viti in acciaio inox,  
 dadi in ottone nichelato

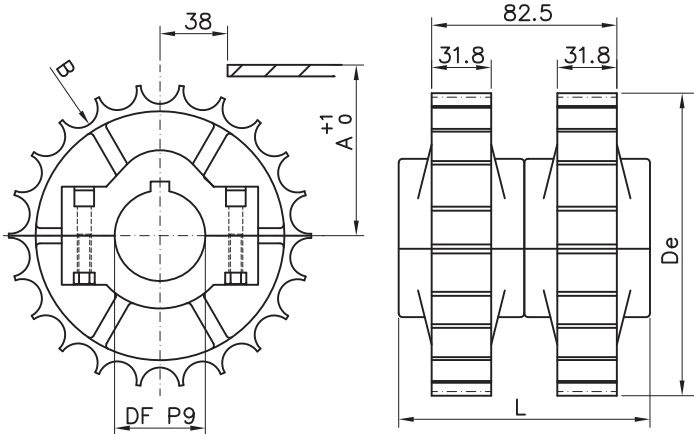
CODICE	Z	De	Dp	A	B	Df
R00725 25	25	154.0	153.2	79.8	140.1	25
R00725 30						30
R00725 35						35
R00725 40						40



**RUOTE TRAINO E RINVIO STAMPATE**  
**Serie 821/LBP821**



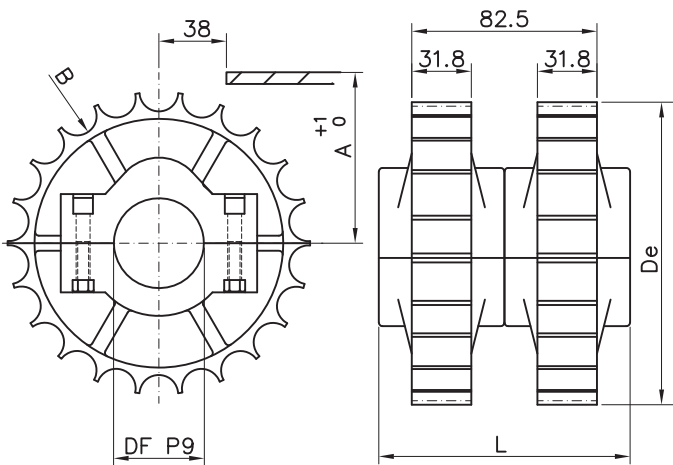
Pignoni in due metà  
 materiale: poliammide rinforzato - viti in acciaio inox,  
 dadi in ottone nichelato / sede chiavetta: UNI 6604-69



CODICE	Z	De	Dp	A	B	L	Df
S10721 35	21	129.5	129.26	79.8	140.1	102.0	35
S10721 40							40
S10721 45							45
S10723 35	23	142.0	141.22	79.8	140.1	102.0	35
S10723 40							40
S10723 45							45
S10725 35	25	154.2	153.21	79.8	140.1	117.0	35
S10725 40							40
S10725 45							45

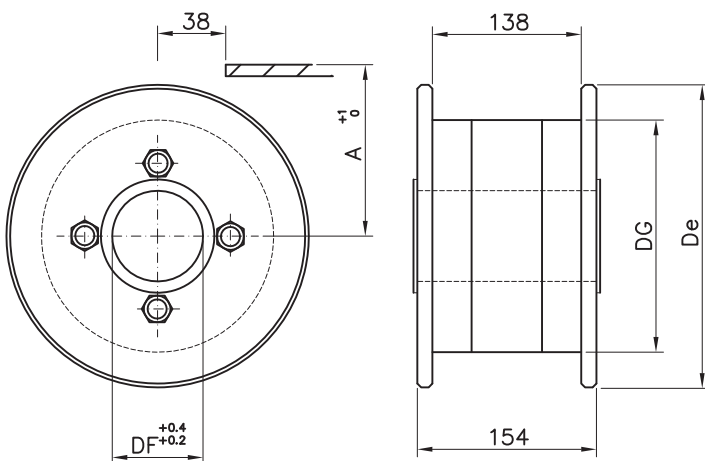
**RUOTE RINVIO STAMPATE**  
**Serie 821/LBP821**

Ruote rinvio in due metà  
 materiale: poliammide rinforzato - viti in acciaio inox,  
 dadi in ottone nichelato



CODICE	Z	De	Dp	A	B	L	Df
R10721 35	21	129.5	129.26	79.8	140.1	102.0	35
R10721 40							40
R10721 45							45
R10723 35	23	142.0	141.22	79.8	140.1	102.0	35
R10723 40							40
R10723 45							45
R10725 35	25	154.2	153.21	79.8	140.1	117.0	35
R10725 40							40
R10725 45							45

Ruote rinvio intere  
 materiale: poliammide autolubrificante -  
 viti in acciaio zincato / colore: nero



CODICE	Z equiv.	De	Dg	A	Df
K00719 25	19	118.0	80.0	62.6	25
K00719 30					30
K00719 35					35
K00719 40					40
K00721 25	21	128.0	80.0	68.6	25
K00721 30					30
K00721 35					35
K00721 40					40
K00723 25	23	142.5	108.0	74.6	25
K00723 30					30
K00723 35					35
K00723 40					40
K00725 25	25	155.0	108.0	80.5	25
K00725 30					30
K00725 35					35
K00725 40					40



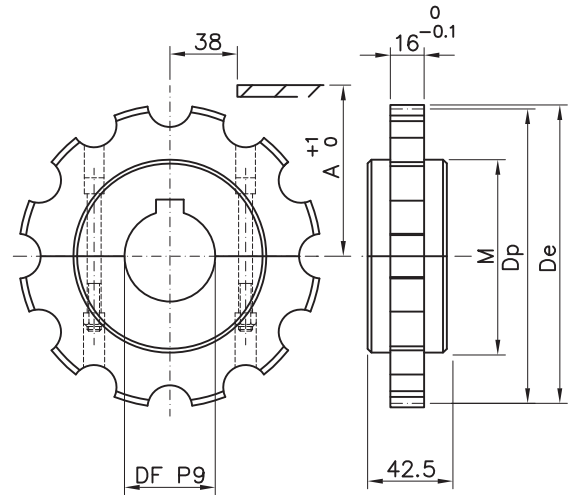
Pignoni in due metà

materiale: poliammide - viti in acciaio inox

sede chiavetta: UNI 6604-69

CODICE	Z	De	Dp	A	B	M	Df
S11809 18	09	110.0	111.4	59.3	95.0	75.0	18*
S11809 25							25
S11809 30							30
S11809 35							35
S11809 40							40
S11810 18	10	122.0	123.3	65.25	107.0	85.0	18*
S11810 25							25
S11810 30							30
S11810 35							35
S11810 40							40
S11811 18	11	135	135.2	71.2	119.0	90.0	18*
S11811 25							25
S11811 30							30
S11811 35							35
S11811 40							40
S11812 18	12	147.3	147.2	77.2	131.0	95.0	18*
S11812 25							25
S11812 30							30
S11812 35							35
S11812 40							40

\* foro grezzo

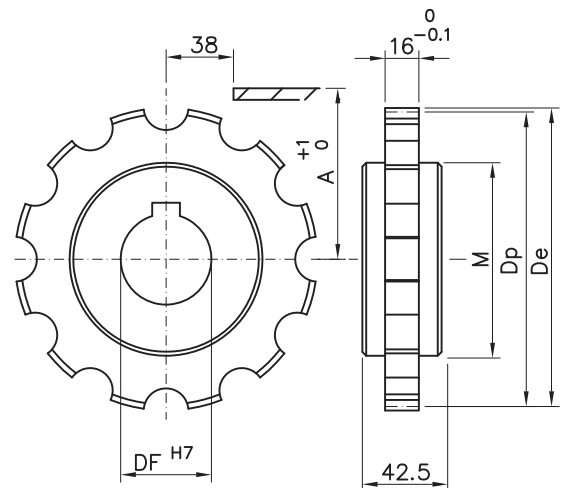


Pignoni interi

materiale: poliammide

sede chiavetta: UNI 6604-69

CODICE	Z	De	Dp	A	B	M	Df
S01809 25	09	110.0	111.4	59.3	95.0	75.0	25
S01809 30							30
S01809 35							35
S01809 40							40
S01810 25							10
S01810 30	30						
S01810 35	35						
S01810 40	40						
S01811 25	11	135.0	135.2	71.2	119.0	90.0	
S01811 30							30
S01811 35							35
S01811 40							40
S01812 25							12
S01812 30	30						
S01812 35	35						
S01812 40	40						

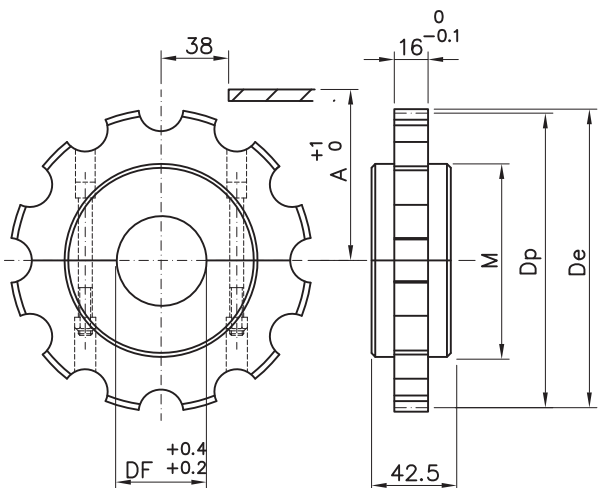


**RUOTE RINVIO FRESATE**

**Serie 878TAB/879/879TAB/879M/880/880TAB/880M**



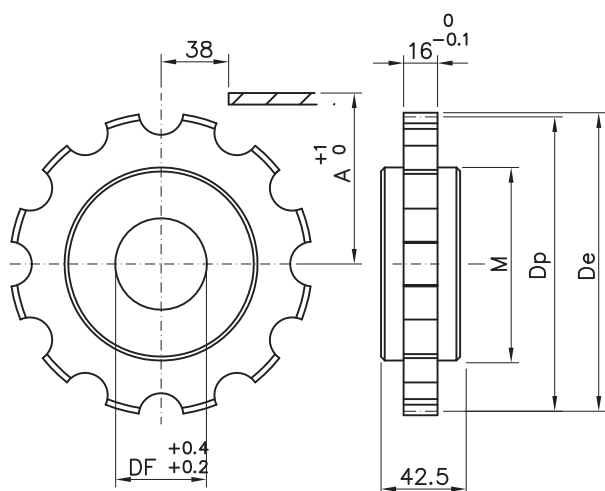
Ruote rinvio in due metà  
materiale: poliammide - viti in acciaio inox



CODICE	Z	De	Dp	A	B	M	Df
R11809 18							18*
R11809 25							25
R11809 30	09	110.0	111.4	59.3	95.0	75.0	30
R11809 35							35
R11809 40							40
R11810 18							18*
R11810 25							25
R11810 30	10	122.0	123.3	65.25	107.0	85.0	30
R11810 35							35
R11810 40							40
R11811 18							18*
R11811 25							25
R11811 30	11	135.0	135.2	71.2	119.0	90.0	30
R11811 35							35
R11811 40							40
R11812 18							18*
R11812 25							25
R11812 30	12	147.3	147.2	77.2	131.0	95.0	30
R11812 35							35
R11812 40							40

\* foro grezzo

Ruote rinvio intere  
materiale: poliammide



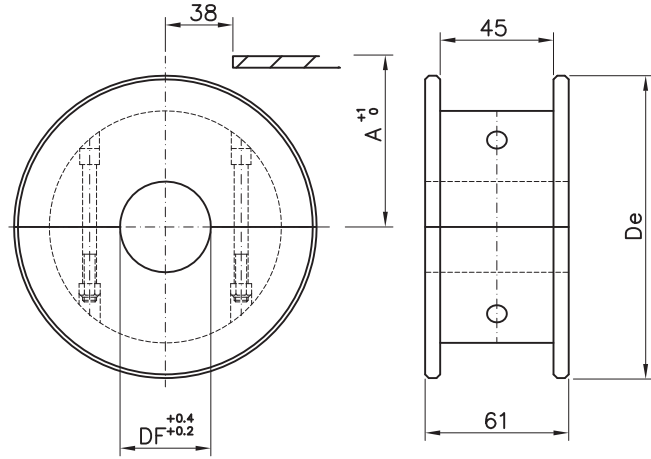
CODICE	Z	De	Dp	A	B	M	Df
R01809 25							25
R01809 30	09	110.0	111.4	59.3	95.0	75.0	30
R01809 35							35
R01809 40							40
R01810 25							25
R01810 30	10	122.0	123.3	65.25	107.0	85.0	30
R01810 35							35
R01810 40							40
R01811 25							25
R01811 30	11	135.0	135.2	71.2	119.0	90.0	30
R01811 35							35
R01811 40							40
R01812 25							25
R01812 30	12	147.3	147.2	77.2	131.0	95.0	30
R01812 35							35
R01812 40							40



**RUOTE RINVIO FRESATE**  
**Serie 879/879M/880/880M**

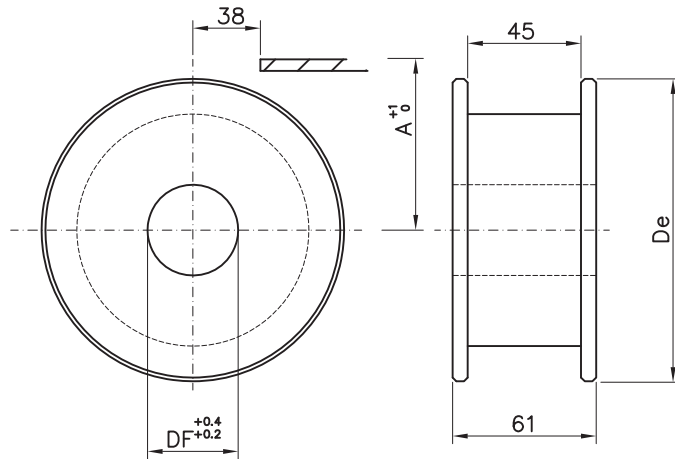
Ruote rinvio in due metà  
 materiale: poliammide - viti in acciaio inox

CODICE	Z equiv.	De	A	Df
P11609 20	09	117.0	62.6	20
P11609 25				25
P11609 30				30
P11609 35				35
P11609 40				40
P11610 20	10	129.8	68.6	20
P11610 25				25
P11610 30				30
P11610 35				35
P11610 40				40
P11611 20	11	142.2	74.6	20
P11611 25				25
P11611 30				30
P11611 35				35
P11611 40				40
P11612 20	12	154.7	80.5	20
P11612 25				25
P11612 30				30
P11612 35				35
P11612 40				40



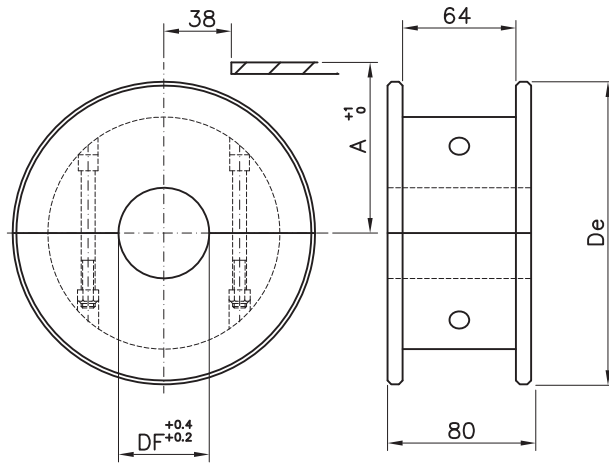
Ruote rinvio intere  
 materiale: poliammide

CODICE	Z equiv.	De	A	Df
P01609 20	09	117.0	62.6	20
P01609 25				25
P01609 30				30
P01609 35				35
P01609 40				40
P01610 20	10	129.8	68.6	20
P01610 25				25
P01610 30				30
P01610 35				35
P01610 40				40
P01611 20	11	142.2	74.6	20
P01611 25				25
P01611 30				30
P01611 35				35
P01611 40				40
P01612 20	12	154.7	80.5	20
P01612 25				25
P01612 30				30
P01612 35				35
P01612 40				40



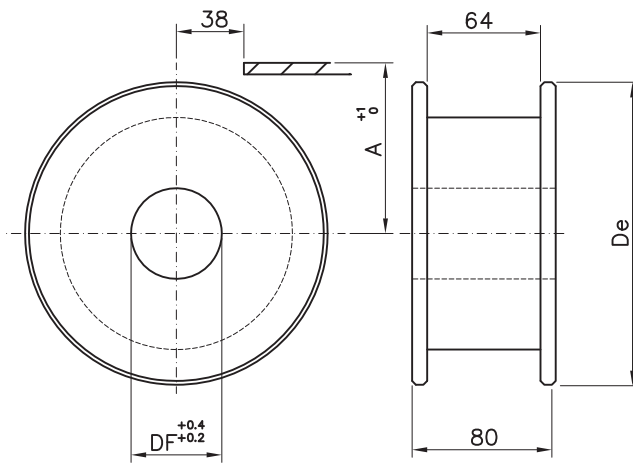


Ruote rinvio in due metà  
 materiale: poliammide - viti in acciaio inox



CODICE	Z equiv.	De	A	Df
B11809 20	09	117.0	62.1	20
B11809 25				25
B11809 30				30
B11809 35				35
B11809 40				40
B11810 20	10	129.8	68.5	20
B11810 25				25
B11810 30				30
B11810 35				35
B11810 40				40
B11811 20	11	142.2	74.7	20
B11811 25				25
B11811 30				30
B11811 35				35
B11811 40				40
B11812 20	12	154.7	80.9	20
B11812 25				25
B11812 30				30
B11812 35				35
B11812 40				40

Ruote rinvio intere  
 materiale: poliammide



CODICE	Z equiv.	De	A	Df
B01809 20	09	117.0	62.1	20
B01809 25				25
B01809 30				30
B01809 35				35
B01809 40				40
B01810 20	10	129.8	68.5	20
B01810 25				25
B01810 30				30
B01810 35				35
B01810 40				40
B01811 20	11	142.2	74.7	20
B01811 25				25
B01811 30				30
B01811 35				35
B01811 40				40
B01812 20	12	154.7	80.9	20
B01812 25				25
B01812 30				30
B01812 35				35
B01812 40				40



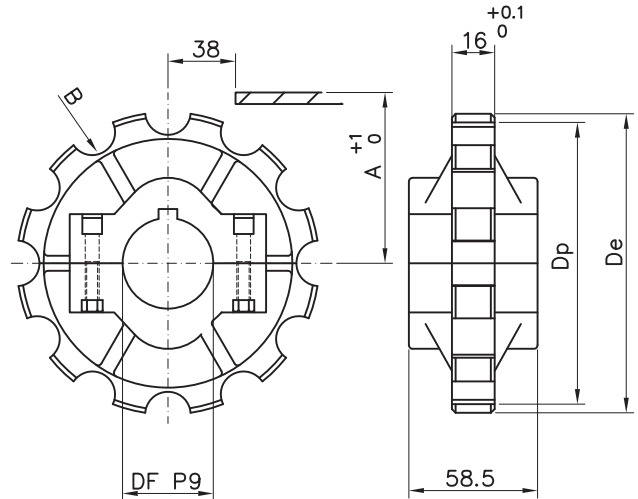
# PIGNONI E RUOTE RINVIO STAMPATE

## Serie 878TAB/879TAB/880TAB

Pignoni in due metà

materiale: poliammide rinforzato - viti in acciaio inox,  
dadi in ottone nichelato / sede chiavetta: UNI 6604-69

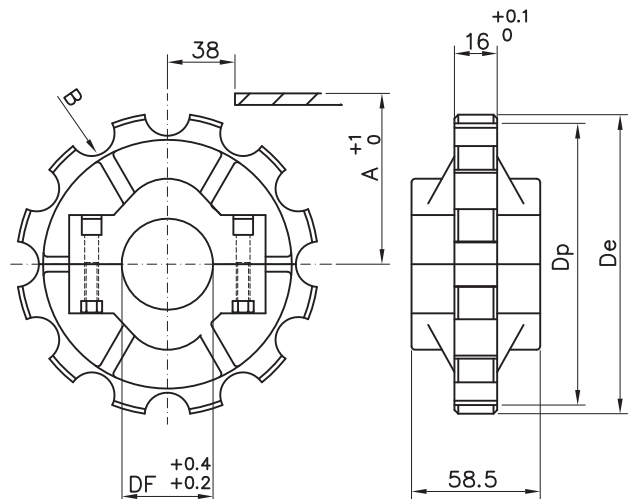
CODICE	Z	De	Dp	A	B	Df
S10810 25	10	122.0	123.3	65.25	107.0	25
S10810 30						30
S10810 35						35
S10810 40						40
S10812 25	12	147.0	146.8	77.2	131.0	25
S10812 30						30
S10812 35						35
S10812 40						40



Ruote rinvio in due metà

materiale: poliammide - viti in acciaio inox,  
dadi in ottone nichelato

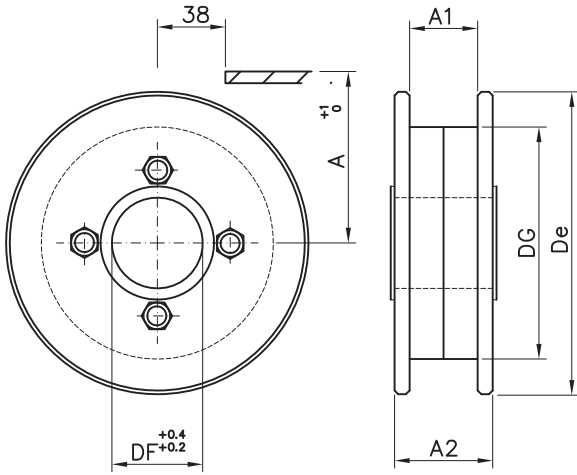
CODICE	Z	De	Dp	A	B	Df
R10810 25	10	122.0	123.3	65.25	107.0	25
R10810 30						30
R10810 35						35
R10810 40						40
R10812 25	12	147.0	146.8	77.2	131.0	25
R10812 30						30
R10812 35						35
R10812 40						40



**RUOTE RINVIO STAMPATE**  
**Serie 879/879M/880/880M**



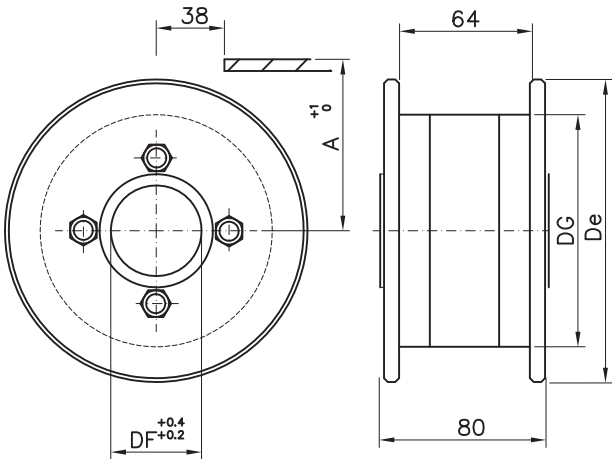
Ruote rinvio  
 materiale: poliammide autolubrificante - viti in acciaio zincato



CODICE	Z equiv.	De	Dg	A	A1	A2	Df
K00608 25	08	106.0	71.0	56.2	44.0	52.0	25
K00608 30							30
K00609 25	09	118.0	80.0	62.6	44.0	60.0	25
K00609 30							30
K00609 35							35
K00609 40							40
K00610 25	10	129.8	80.0	68.6	44.0	60.0	25
K00610 30							30
K00610 35							35
K00610 40							40
K00611 25	11	142.5	108.0	74.6	44.0	60.0	25
K00611 30							30
K00611 35							35
K00611 40							40
K00612 25	12	155.0	108.0	80.5	44.0	60.0	25
K00612 30							30
K00612 35							35
K00612 40							40

**RUOTE RINVIO STAMPATE**  
**Serie 878TAB/879TAB/880TAB**

Ruote rinvio  
 materiale: poliammide autolubrificante - viti in acciaio zincato



CODICE	Z equiv.	De	Dg	A	Df
T00809 25	09	118.0	80.0	62.6	25
T00809 30					30
T00809 35					35
T00809 40					40
T00810 25	10	129.8	80.0	68.6	25
T00810 30					30
T00810 35					35
T00810 40					40
T00811 25	11	142.5	108.0	74.6	25
T00811 30					30
T00811 35					35
T00811 40					40
T00812 25	12	155.0	108.0	80.5	25
T00812 30					30
T00812 35					35
T00812 40					40





PIGNONI FRESATI

Serie 882/882TAB/882M/8257/LBP8257/LBP882M/LBP882TAB

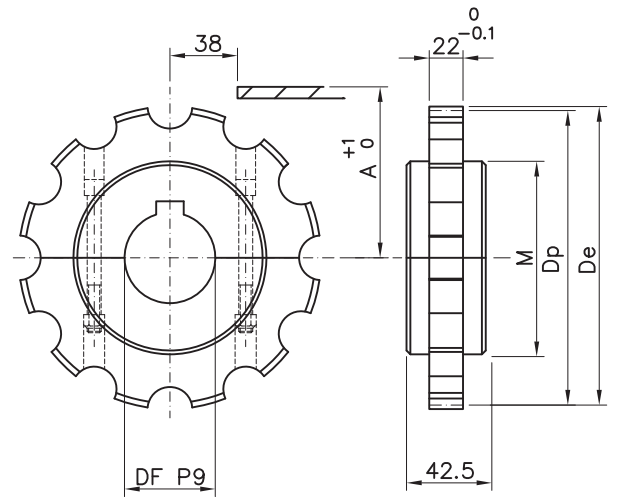
Pignoni in due metà

materiale: poliammide - viti in acciaio inox

sede chiavetta: UNI 6604-69

CODICE	Z	De	Dp	A	B	M	Df
S11909 18	09	112.0	111.4	60.5	92.1	60.0	18*
S11909 25							25
S11909 30							30
S11909 35							35
S11909 40							40
S11910 18	10	125.0	123.2	66.4	104.0	75.0	18*
S11910 25							25
S11910 30							30
S11910 35							35
S11910 40							40
S11911 18	11	137.0	135.2	72.4	116.0	85.0	18*
S11911 25							25
S11911 30							30
S11911 35							35
S11911 40							40
S11912 18	12	149.0	147.2	78.4	127.9	90.0	18*
S11912 25							25
S11912 30							30
S11912 35							35
S11912 40							40

\* foro grezzo

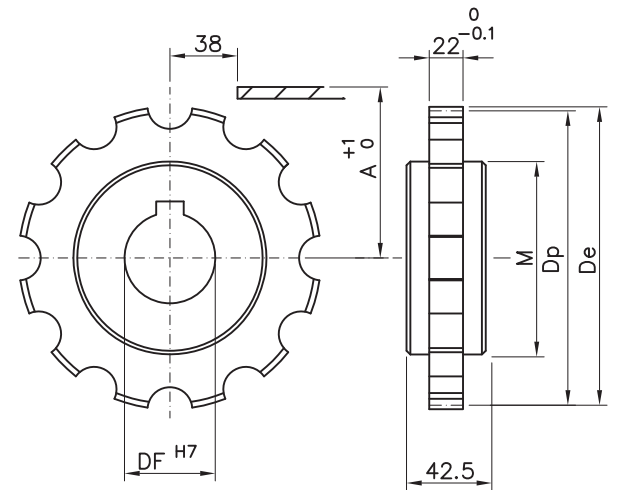


Pignoni interi

materiale: poliammide

sede chiavetta: UNI 6604-69

CODICE	Z	De	Dp	A	B	M	Df
S01909 30	09	112.0	111.4	60.5	92.1	60.0	30
S01909 35							35
S01909 40							40
S01910 30	10	125.0	123.2	66.4	104.0	75.0	30
S01910 35							35
S01910 40							40
S01911 30	11	137.0	135.2	72.4	116.0	85.0	30
S01911 35							35
S01911 40							40
S01912 30	12	149.0	147.2	78.4	127.9	90.0	30
S01912 35							35
S01912 40							40

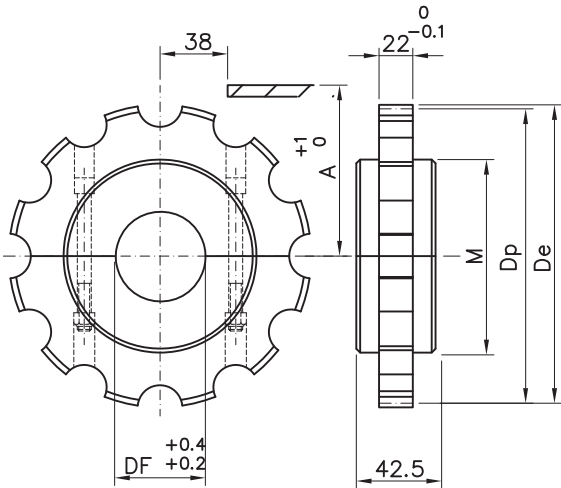


**RUOTE RINVIO FRESATE**

Serie 882/882TAB/882M/8257/LBP8257/LBP882M/LBP882TAB

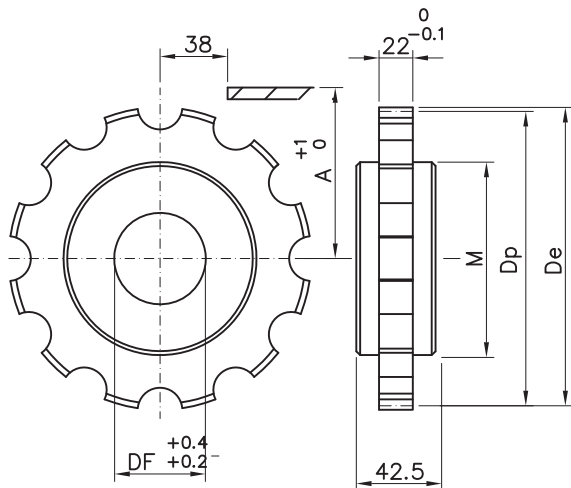


Ruote rinvio in due metà  
materiale: poliammide - viti in acciaio inox



CODICE	Z	De	Dp	A	B	M	Df
R11909 30	09	112.0	111.4	60.5	92.1	60.0	30
R11909 35							35
R11909 40							40
R11910 30	10	125.0	123.2	66.4	104.0	75.0	30
R11910 35							35
R11910 40							40
R11911 30	11	137.0	135.2	72.4	116.0	85.0	30
R11911 35							35
R11911 40							40
R11912 30	12	149.0	147.2	78.4	127.9	90.0	30
R11912 35							35
R11912 40							40

Ruote rinvio intere  
materiale: poliammide



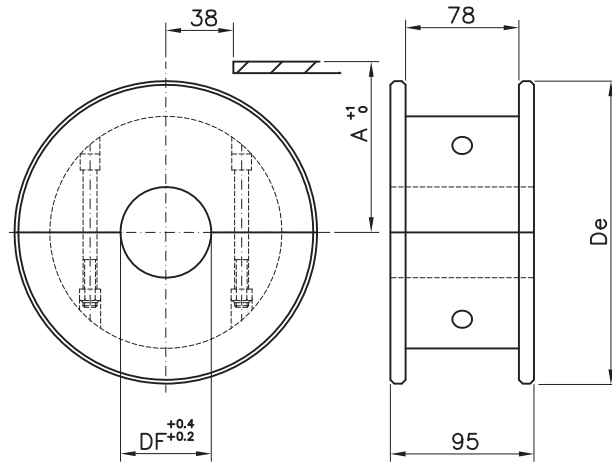
CODICE	Z	De	Dp	A	B	M	Df
R01909 30	09	112.0	111.4	60.5	92.1	60.0	30
R01909 35							35
R01909 40							40
R01910 30	10	125.0	123.2	66.4	104.0	75.0	30
R01910 35							35
R01910 40							40
R01911 30	11	137.0	135.2	72.4	116.0	85.0	30
R01911 35							35
R01911 40							40
R01912 30	12	149.0	147.2	78.4	127.9	90.0	30
R01912 35							35
R01912 40							40



**RUOTE RINVIO FRESATE**  
**Serie 882TAB/LBP882TAB**

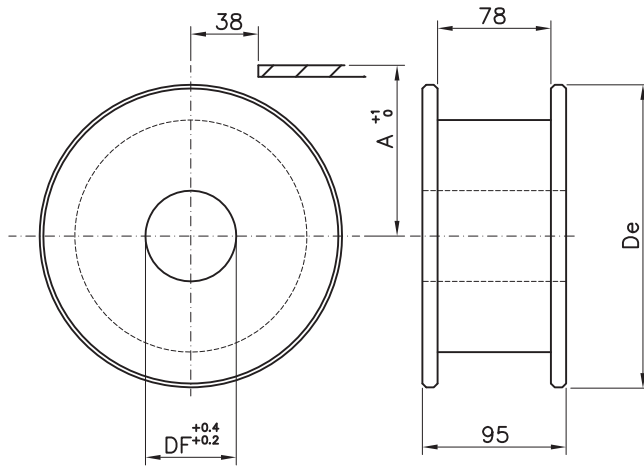
Ruote rinvio in due metà  
materiale: poliammide - viti in acciaio inox

CODICE	Z equiv.	De	A	Df
B11909 20	09	117.0	63.8	20
B11909 25				25
B11909 30				30
B11909 35				35
B11909 40				40
B11910 20	10	129.8	69.5	20
B11910 25				25
B11910 30				30
B11910 35				35
B11910 40				40
B11911 20	11	142.2	75.9	20
B11911 25				25
B11911 30				30
B11911 35				35
B11911 40				40
B11912 20	12	154.7	82.1	20
B11912 25				25
B11912 30				30
B11912 35				35
B11912 40				40



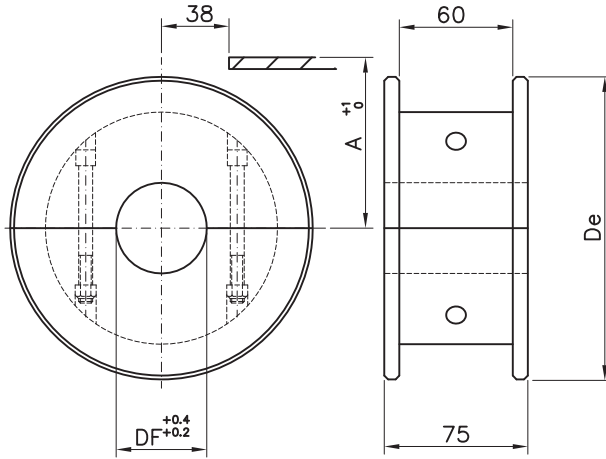
Ruote rinvio intere  
materiale: poliammide

CODICE	Z equiv.	De	A	Df
B01909 20	09	117.0	63.8	20
B01909 25				25
B01909 30				30
B01909 35				35
B01909 40				40
B01910 20	10	129.8	69.5	20
B01910 25				25
B01910 30				30
B01910 35				35
B01910 40				40
B01911 20	11	142.2	75.9	20
B01911 25				25
B01911 30				30
B01911 35				35
B01911 40				40
B01912 20	12	154.7	82.1	20
B01912 25				25
B01912 30				30
B01912 35				35
B01912 40				40





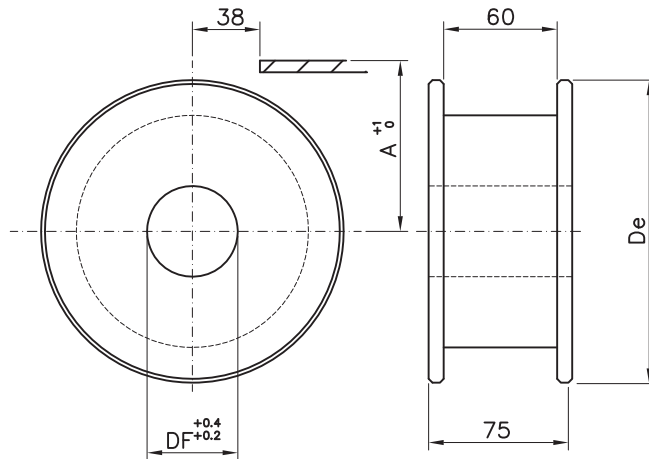
Ruote rinvio in due metà  
 materiale: poliammide - viti in acciaio inox



P11429 20				20
P11429 25				25
P11429 30	29	179.3	92.8	30
P11429 35				35
P11429 40				40

CODICE	Z equiv.	De	A	Df
P11417 20				20
P11417 25				25
P11417 30	17	104.0	56.2	30
P11417 35				35
P11417 40				40
P11419 20				20
P11419 25				25
P11419 30	19	117.0	62.6	30
P11419 35				35
P11419 40				40
P11421 20				20
P11421 25				25
P11421 30	21	129.8	68.6	30
P11421 35				35
P11421 40				40
P11423 20				20
P11423 25				25
P11423 30	23	142.2	74.6	30
P11423 35				35
P11423 40				40
P11425 20				20
P11425 25				25
P11425 30	25	154.7	80.5	30
P11425 35				35
P11425 40				40
P11427 20				20
P11427 25				25
P11427 30	27	167.2	86.5	30
P11427 35				35
P11427 40				40

Ruote rinvio intere  
 materiale: poliammide



P01429 20				20
P01429 25				25
P01429 30	29	179.3	92.8	30
P01429 35				35
P01429 40				40

CODICE	Z equiv.	De	A	Df
P01417 20				20
P01417 25				25
P01417 30	17	104.0	56.2	30
P01417 35				35
P01417 40				40
P01419 20				20
P01419 25				25
P01419 30	19	117.0	62.6	30
P01419 35				35
P01419 40				40
P01421 20				20
P01421 25				25
P01421 30	21	129.8	68.6	30
P01421 35				35
P01421 40				40
P01423 20				20
P01423 25				25
P01423 30	23	142.2	74.6	30
P01423 35				35
P01423 40				40
P01425 20				20
P01425 25				25
P01425 30	25	154.7	80.5	30
P01425 35				35
P01425 40				40
P01427 20				20
P01427 25				25
P01427 30	27	167.2	86.5	30
P01427 35				35
P01427 40				40

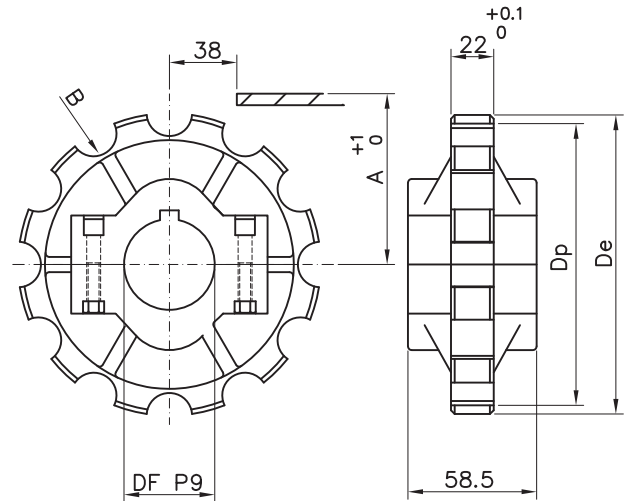


**PIGNONI E RUOTE RINVIO STAMPATE**  
**Serie 882/882TAB/882M/8257/LBP8257**

Pignoni in due metà

materiale: poliammide rinforzata - viti in acciaio inox, dadi in ottone nichelato / sede chiavetta: UNI 6604-69

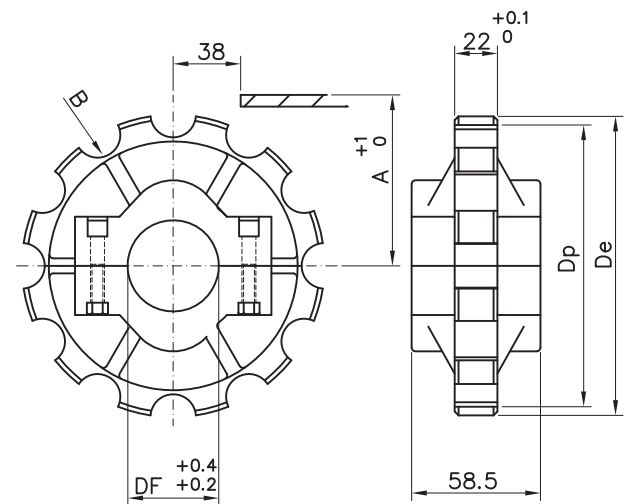
CODICE	Z	De	Dp	A	B	Df
S10910 25	10	125.0	123.3	104.0	65.4	25
S10910 30						30
S10910 35						35
S10910 40						40
S10912 25	12	149.2	147.2	128.0	78.4	25
S10912 30						30
S10912 35						35
S10912 40						40



Ruote rinvio in due metà

materiale: poliammide - viti in acciaio inox, dadi in ottone nichelato

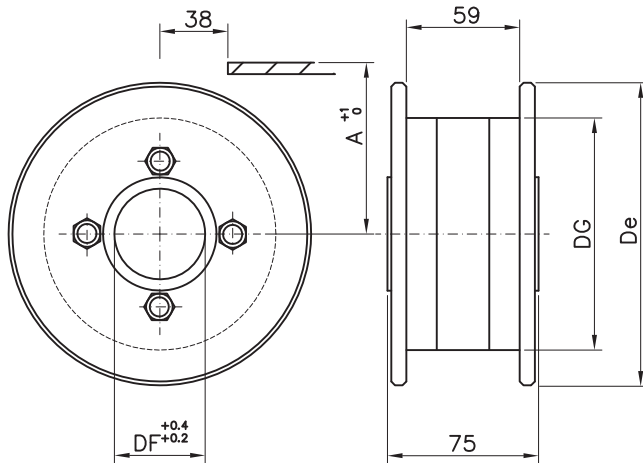
CODICE	Z	De	Dp	A	B	Df
R10910 25	10	125.0	123.3	104.0	65.4	25
R10910 30						30
R10910 35						35
R10910 40						40
R10912 25	12	149.2	147.2	128.0	78.4	25
R10912 30						30
R10912 35						35
R10912 40						40



**RUOTE RINVIO STAMPATE**  
**Serie 882M/8257/LBP8257/LBP882M**



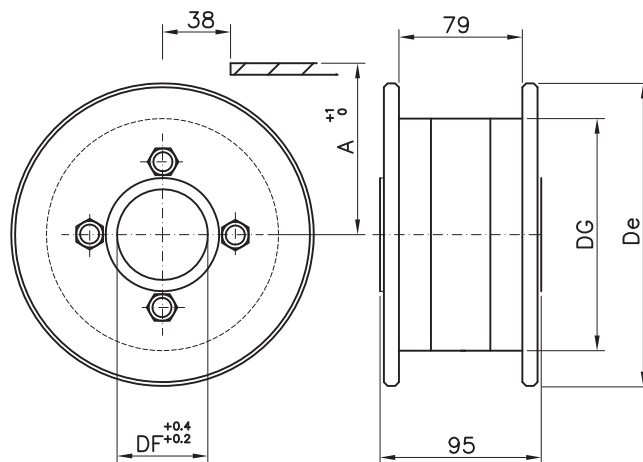
Ruote rinvio intere  
 materiale: poliammide autolubrificante -  
 viti in acciaio zincato



CODICE	Z equiv.	De	Dg	A	Df
K00419 25	19	118.0	80.0	62.6	25
K00419 30					30
K00419 35					35
K00419 40					40
K00421 25	21	129.8	80.0	68.6	25
K00421 30					30
K00421 35					35
K00421 40					40
K00423 25	23	142.5	108.0	74.6	25
K00423 30					30
K00423 35					35
K00423 40					40
K00425 25	25	155.0	108.0	80.5	25
K00425 30					30
K00425 35					35
K00425 40					40

**RUOTE RINVIO STAMPATE**  
**Serie 882TAB/LBP882TAB**

Ruote rinvio intere  
 materiale: poliammide autolubrificante -  
 viti in acciaio zincato



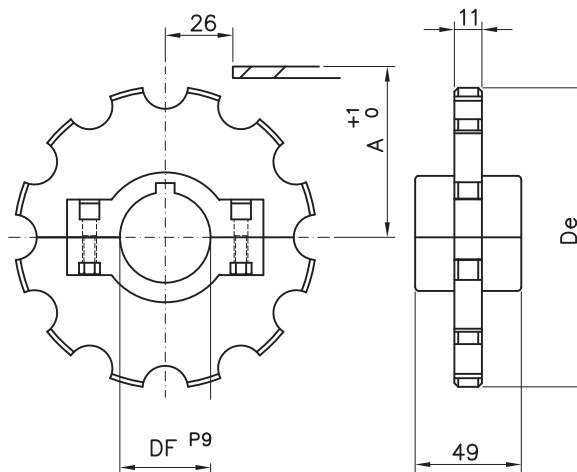
CODICE	Z equiv.	De	Dg	A	Df
T00910 25	10	129.8	80.0	68.6	25
T00910 30					30
T00910 35					35
T00910 40					40
T00912 25	12	155.0	108.0	80.5	25
T00912 30					30
T00912 35					35
T00912 40					40



**PIGNONI E RUOTE RINVIO STAMPATE**  
**Serie 780M/780MFG/780TAB/780FGTAB/790TAB**

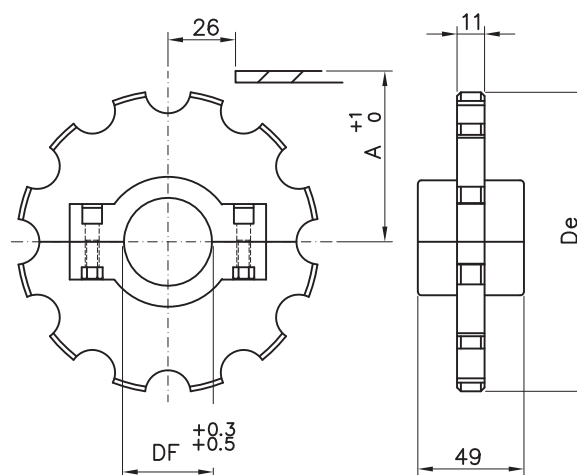
Pignoni in due metà  
 materiale: poliammide rinforzata - viti in acciaio inox  
 sede chiavetta: UNI 6604-69

CODICE	Z	De	Dp	A	Df
S10A16 30	16	130.9	128.9	67.8	30
S10A16 35					35
S10A16 40					40
S10A16 45					45
S10A18 30	18	146.8	144.8	75.7	30
S10A18 35					35
S10A18 40					40
S10A18 45					45
S10A19 30	19	156.3	154.3	80.5	30
S10A19 35					35
S10A19 40					40
S10A19 45					45



Ruote rinvio in due metà  
 materiale: poliammide - viti in acciaio inox

CODICE	Z	De	Dp	A	Df
R10A16 30	16	130.9	128.9	67.8	30
R10A16 35					35
R10A16 40					40
R10A16 45					45
R10A18 30	18	146.8	144.8	75.7	30
R10A18 35					35
R10A18 40					40
R10A18 45					45
R10A19 30	19	156.3	154.3	80.5	30
R10A19 35					35
R10A19 40					40
R10A19 45					45

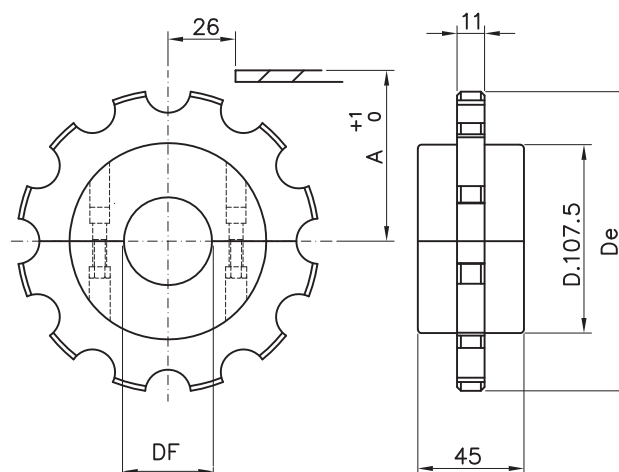


**PIGNONI FRESATI**  
**Serie 780M/780MFG/780TAB/780FGTAB/790TAB**

Pignoni in due metà  
 materiale: poliammide PA bianco - viti in acciaio inox

CODICE	Z	De	Dp	A
S11A16 ...	16	130.9	128.9	67.8
S11A18 ...	18	146.8	144.8	75.7
S11A19 ...	19	156.3	154.3	80.5

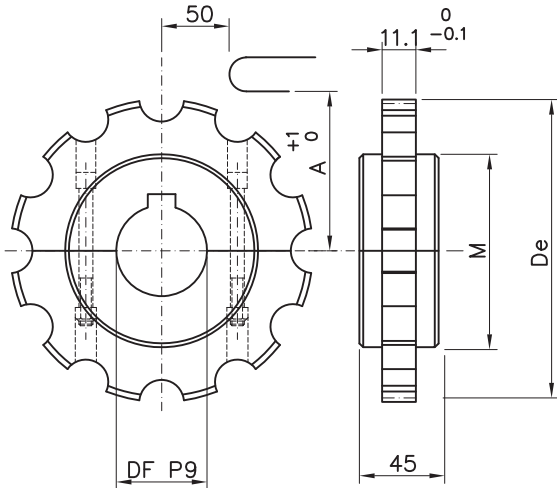
Df	25/30/35/40/45/50
----	-------------------



**PIGNONI E RUOTE RINVIO FRESATE**  
**Serie 1700/1701/1702**

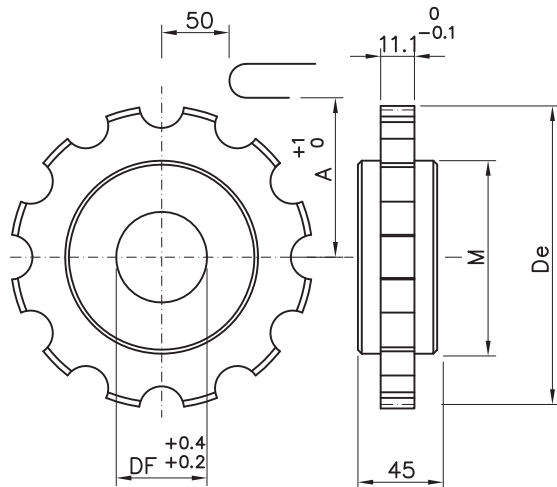


Pignoni in due metà  
 materiale: poliammide - viti in acciaio inox  
 sede chiavetta: UNI 6604-69



CODICE	Z	De	Dp	A	M	Df
S11M08 19	08	132.8	130.65	53.3	79.0	19*
S11M08 25						25
S11M08 30						30
S11M08 35						35
S11M08 40						40
S11M10 19	10	165.1	161.8	68.9	110.0	19*
S11M10 25						25
S11M10 30						30
S11M10 35						35
S11M10 40						40
S11M13 19	13	215.2	208.95	92.5	158.0	19*
S11M13 25						25
S11M13 30						30
S11M13 35						35
S11M13 40						40

\* foro grezzo



Ruote rinvio intere  
 materiale: poliammide

CODICE	Z	De	Dp	A	M	Df
R01M08 19	08	132.8	130.65	53.3	79.0	19*
R01M08 25						25
R01M08 30						30
R01M08 35						35
R01M08 40						40
R01M10 19	10	165.1	161.8	68.9	110.0	19*
R01M10 25						25
R01M10 30						30
R01M10 35						35
R01M10 40						40
R01M13 19	13	215.2	208.95	92.5	158.0	19*
R01M13 25						25
R01M13 30						30
R01M13 35						35
R01M13 40						40

\* foro grezzo



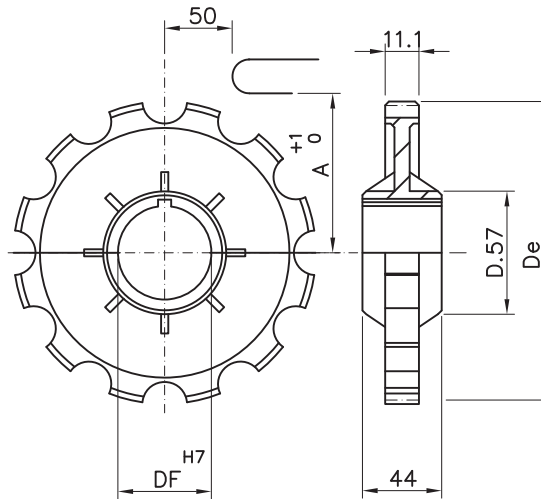


**PIGNONI E RUOTE RINVIO STAMPATE**  
**Serie 1700/1701/1702**

Pignone intero

materiale: poliammide PA bianco,  
mozzo boccola in ottone  
sede chiavetta: UNI 6604-69

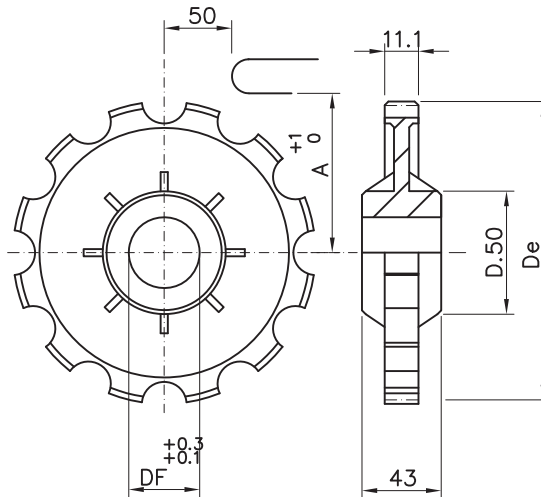
CODICE	Z	De	Dp	Df
S00M10 24	10	165.1	161.8	24
S00M10 25				25
S00M10 30				30



Ruota rinvio intera

materiale: poliammide PA bianco

CODICE	Z	De	Dp	Df
R00M10 25	10	165.1	161.8	25



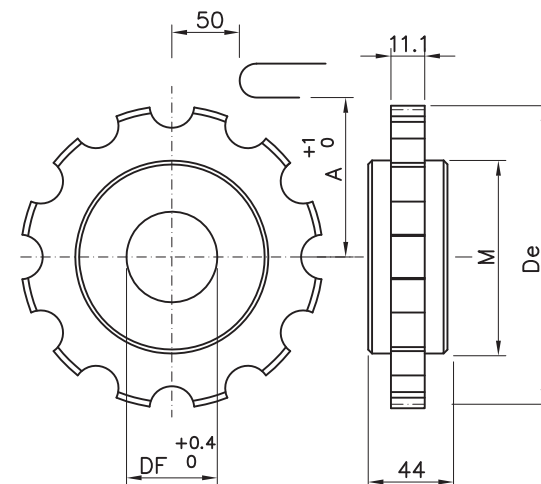
**PIGNONI E RUOTE RINVIO FRESATE**  
**Serie 1700/1701/1702**

Pignone intero

materiale: acciaio ZN (Z), inox (X)

CODICE	Z	De	Dp	A	Df
S01Z10 20*	10	165.1	161.8	69.0	20
S01X10 20*	10	165.1	161.8	60.0	20
S01Z12 20*	12	196.1	193.19	69.0	20

\* a richiesta per quantità adeguate

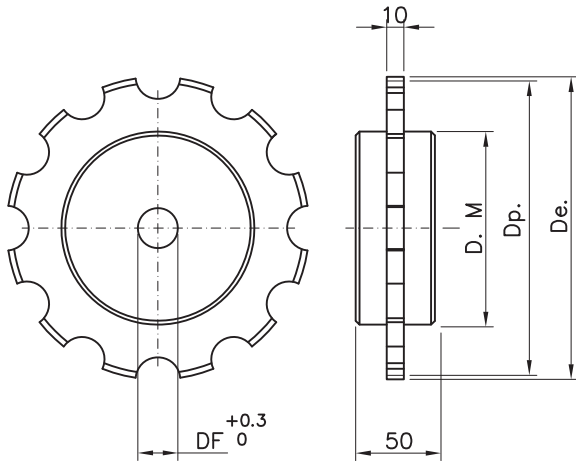




Pignoni e ruote rinvio interi  
materiale: poliammide

CODICE	Z	De	Dp	M	Df
S01C06 20	06	128.0	127.0	74.0	20
S01C08 20	08	177.7	165.93	119.0	20
S01C10 20	10	219.3	205.49	161.0	20
S01C12 20*	12	256.0	246.0	96.0	20
S01C14 20*	14	297.0	286.0	96.0	20

\* a richiesta per quantità adeguate

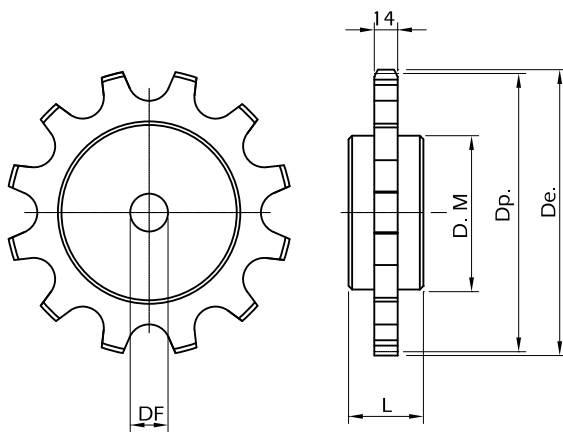


Pignoni e ruote rinvio interi  
materiale: ghisa

CODICE	Z	De	Dp	M	L	Df
S01G08 19*	08	175.3	167.4	75.0	50.0	19**
S01G10 19*	10	216.0	207.3	100.0	50.0	19**
S01G12 19*	12	254.0	247.4	100.0	63.5	19**
S01G14 19*	14	294.6	287.8	100.0	63.5	19**

\* a richiesta per quantità adeguate

\*\* foro grezzo



**PIGNONI E RUOTE RINVIO FRESATE**  
**Serie 1400**

Pignoni e ruote rinvio interi  
materiale: ghisa / poliammide

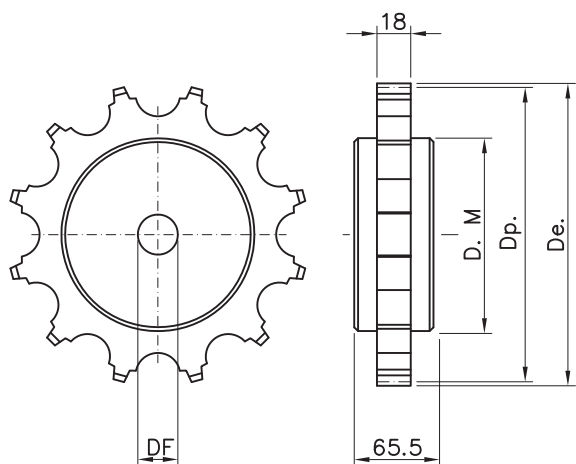
CODICE	Z	De	Dp	M	Df
S01D10 19*	10	298.0	267.2	105.0	19**

\* a richiesta per quantità adeguate

\*\* foro grezzo

CODICE S01D... poliammide

CODICE S01F... ghisa

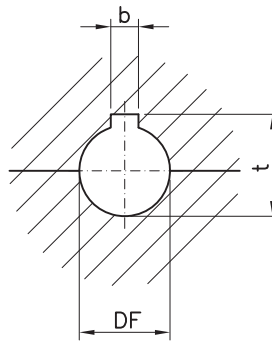




**DIMENSIONI E TOLLERANZE CHIAVETTE**  
**UNI 6604-69/ISO773/DIN6885**

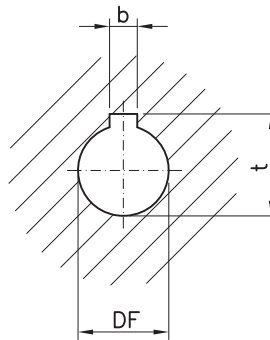
Pignone in due metà

DF mm		b mm		t mm	
Dim	Tol	Dim	Tol	Dim	Tol
20	P9	6	P9	22.8	+ 0.1
	- 0.022		- 0.012		0
	- 0.074		- 0.042		
25	P9	8	P9	28.3	+ 0.2
	- 0.022		- 0.015		0
	- 0.074		- 0.051		
30	P9	8	P9	33.3	+ 0.2
	- 0.022		- 0.015		0
	- 0.074		- 0.051		
35	P9	10	P9	38.3	+ 0.2
	- 0.026		- 0.015		0
	- 0.088		- 0.051		
40	P9	12	P9	43.3	+ 0.2
	- 0.026		- 0.018		0
	- 0.088		- 0.061		
45	P9	14	P9	48.8	+ 0.2
	- 0.026		- 0.018		0
	- 0.088		- 0.061		
50	P9	14	P9	53.8	+ 0.2
	- 0.026		- 0.018		0
	- 0.088		- 0.061		



Pignoni interi

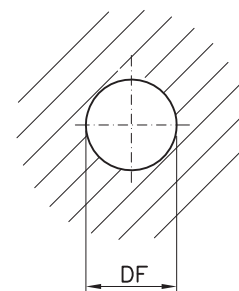
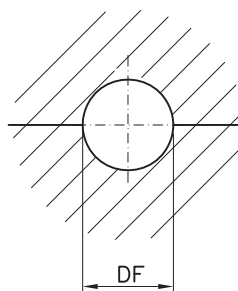
DF mm		b mm		t mm	
Dim	Tol	Dim	Tol	Dim	Tol
20	H7	6	D10	22.8	+ 0.1
	+0.021		- 0.078		0
	0		- 0.030		
25	H7	8	D10	28.3	+ 0.2
	+0.021		- 0.098		0
	0		- 0.040		
30	H7	8	D10	33.3	+ 0.2
	+0.021		- 0.098		0
	0		- 0.040		
35	H7	10	D10	38.3	+ 0.2
	+0.025		- 0.098		0
	0		- 0.040		
40	H7	12	D10	43.3	+ 0.2
	+0.025		- 0.120		0
	0		- 0.050		
45	H7	14	D10	48.8	+ 0.2
	+0.025		- 0.120		0
	0		- 0.050		
50	H7	14	D10	53.8	+ 0.2
	+0.025		- 0.120		0
	0		- 0.050		



Ruote rinvio intere e in due metà

DF mm	
Dim	Tol
20	+ 0.4
	+ 0.2
25	+ 0.4
	+ 0.2
30	+ 0.4
	+ 0.2
35	+ 0.4
	+ 0.2

40	+ 0.4
	+ 0.2
45	+ 0.4
	+ 0.2
50	+ 0.4
	+ 0.2

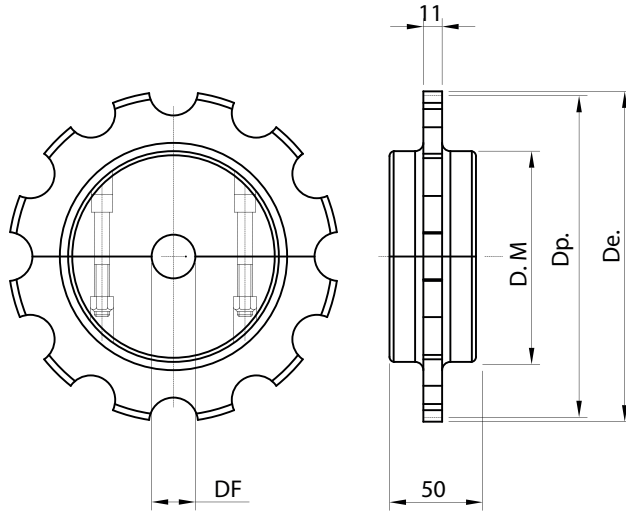


# MACHINED SPROCKETS and IDLER WHEELS 600 Series

Split sprockets  
material: polyamide - screw in stainless steel  
UNI 6604-69 key seat

CODE	Z	De	Dp	DM	Df
S11C0820	8	166,0	172,0	105	20*
S11C1020	10	205,0	215,0	105	20*
S11C1220	12	246,0	256,0	105	20*
S11C1420	14	286,0	297,0	105	20*

\* plain bore



ACCESSORIES

# MACHINED SPROCKETS and IDLER WHEELS 1400 Series

Standard sprockets and idler wheels  
material: polyamide

CODE	Z	De	Dp	DM	Df
S01D0819	8	8	204	90	19*
S01D1019	10	10	267	140	19*

\* plain bore

